



Tropical Storm Ida BRIEFING

10:00 AM CDT
Friday, August 27, 2021

What has changed: Landfall forecast shifts a little to the west.

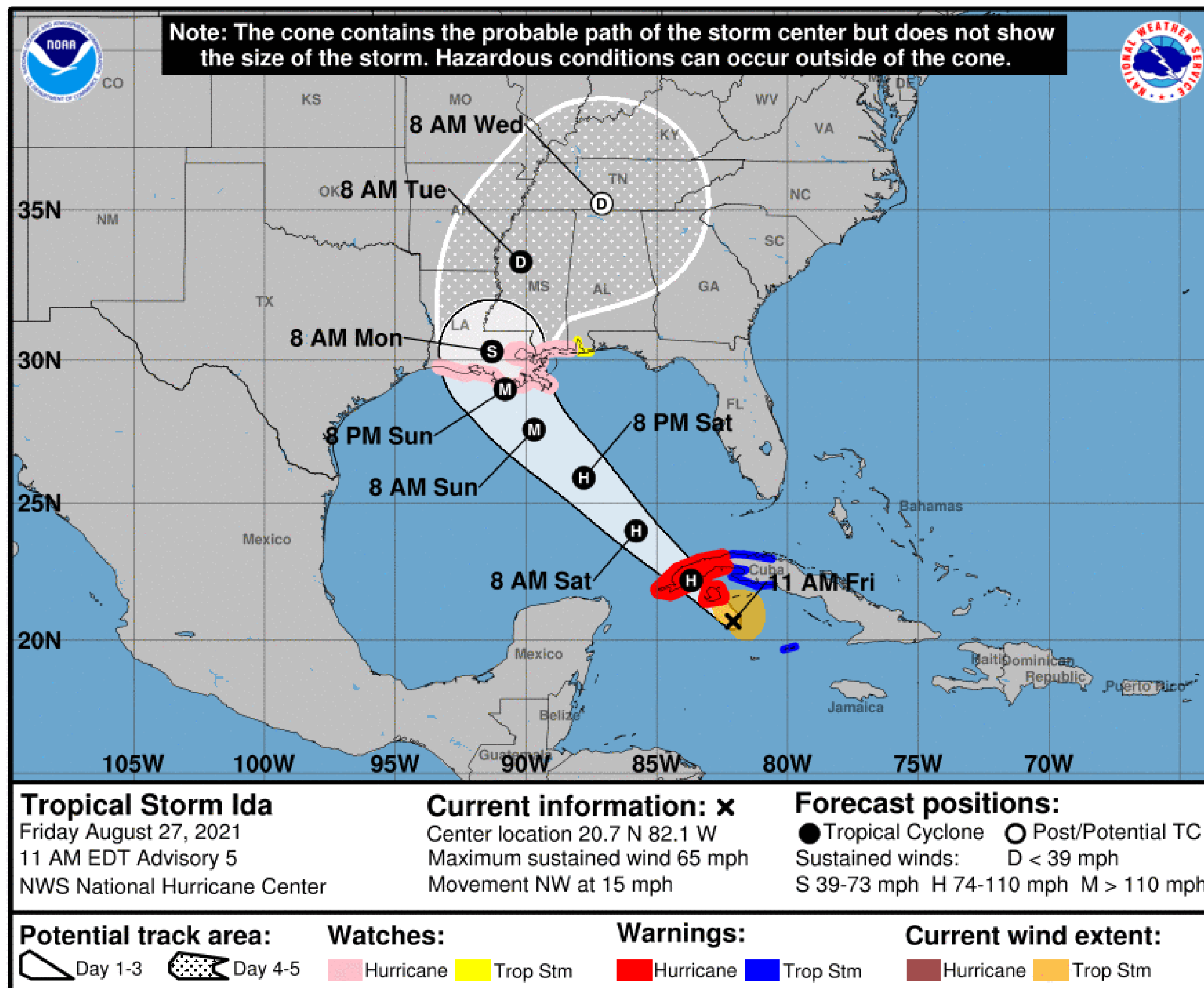
Next Briefing: Friday, August 27 at 4 pm CDT

Disclaimer: The information contained within is time-sensitive. Do not use after 4:00 pm CDT Friday.



Situation Overview

Tropical Storm Ida



NOTE: Do not focus on the exact track.

Impacts can occur well outside the area enclosed by the cone.

10:00 AM CDT Fri Aug 27

Location: *20.7°N 82.1°W*

Moving: *NW at 15 mph*

Min pressure: *996 mb*

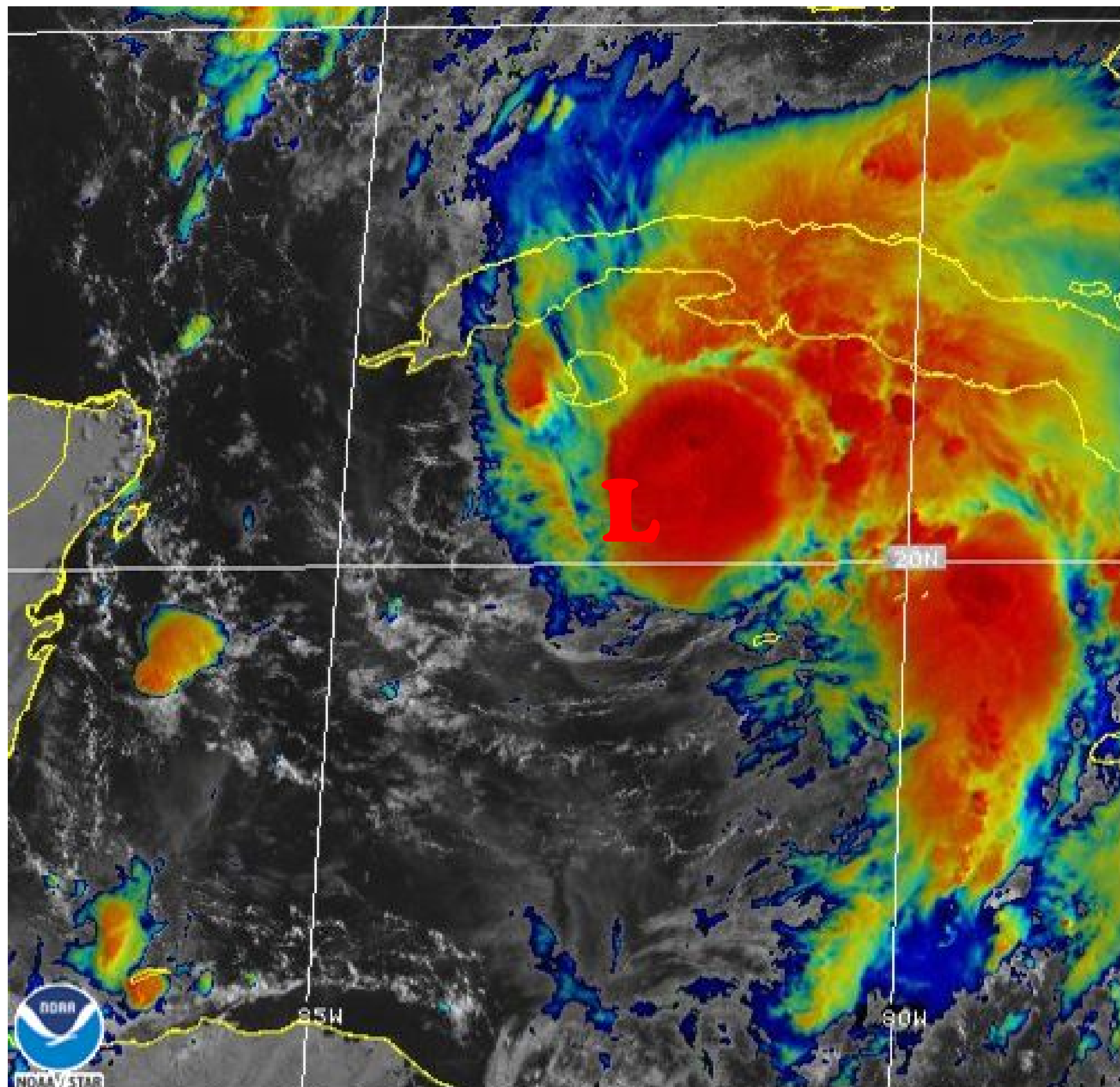
Max sustained: *65 mph*

- Ida should strengthen to a hurricane this afternoon or tonight.
- As Ida moves across the Gulf of Mexico, it is forecast to strengthen rapidly to a major (category 3 or stronger) hurricane.



Current Satellite View

Tropical Storm Ida



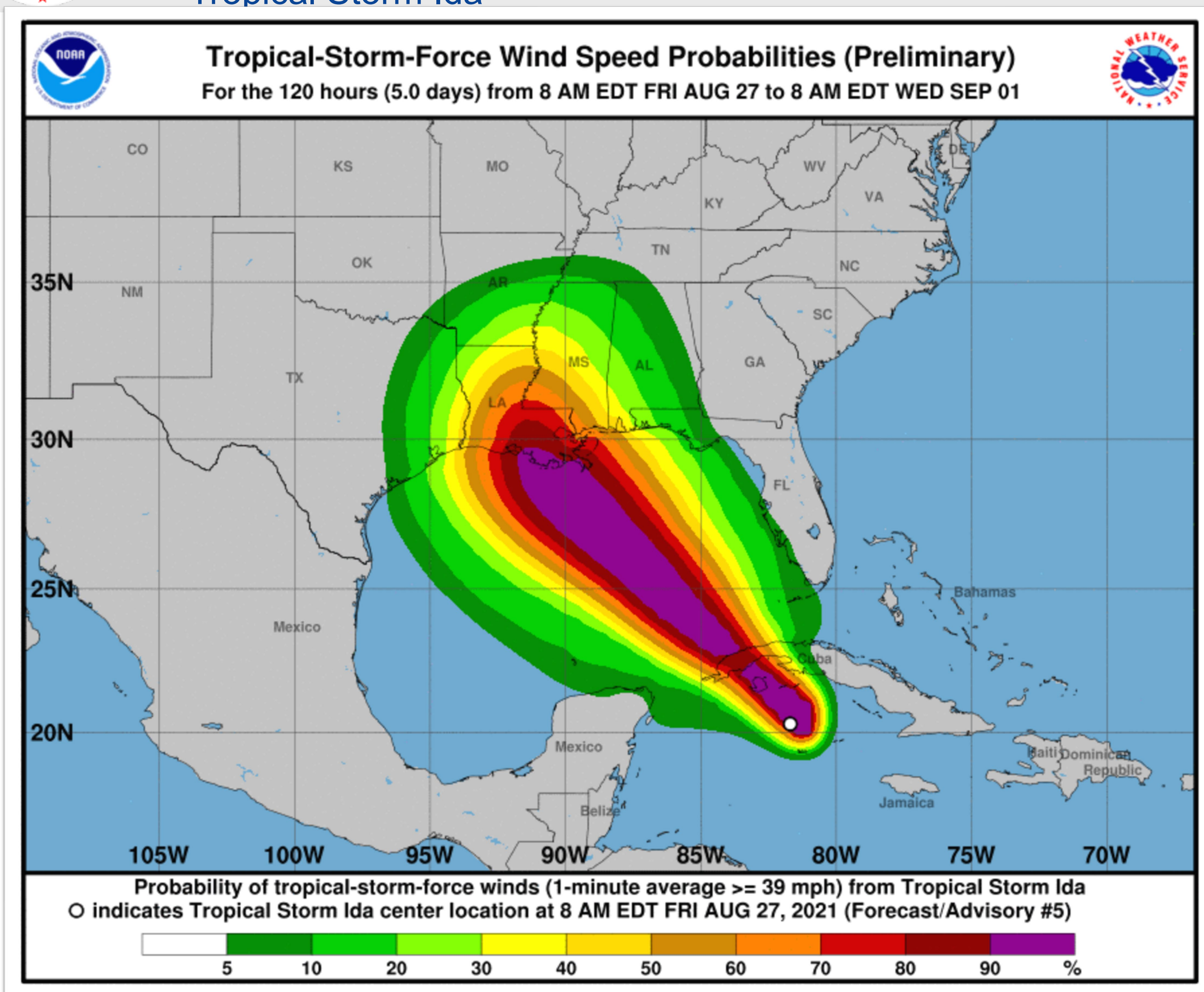
27 Aug 2021 13:45Z NESDIS/STAR GOES-East Sandwich

- A large burst of convection is seen east of the center of circulation.
- The west side still shows a lot of dry air.



Tropical Storm Wind Speed Probabilities

Tropical Storm Ida



Southeast Texas: 30-50%

East Texas: 30-50%

Southwest Louisiana: 50-70%

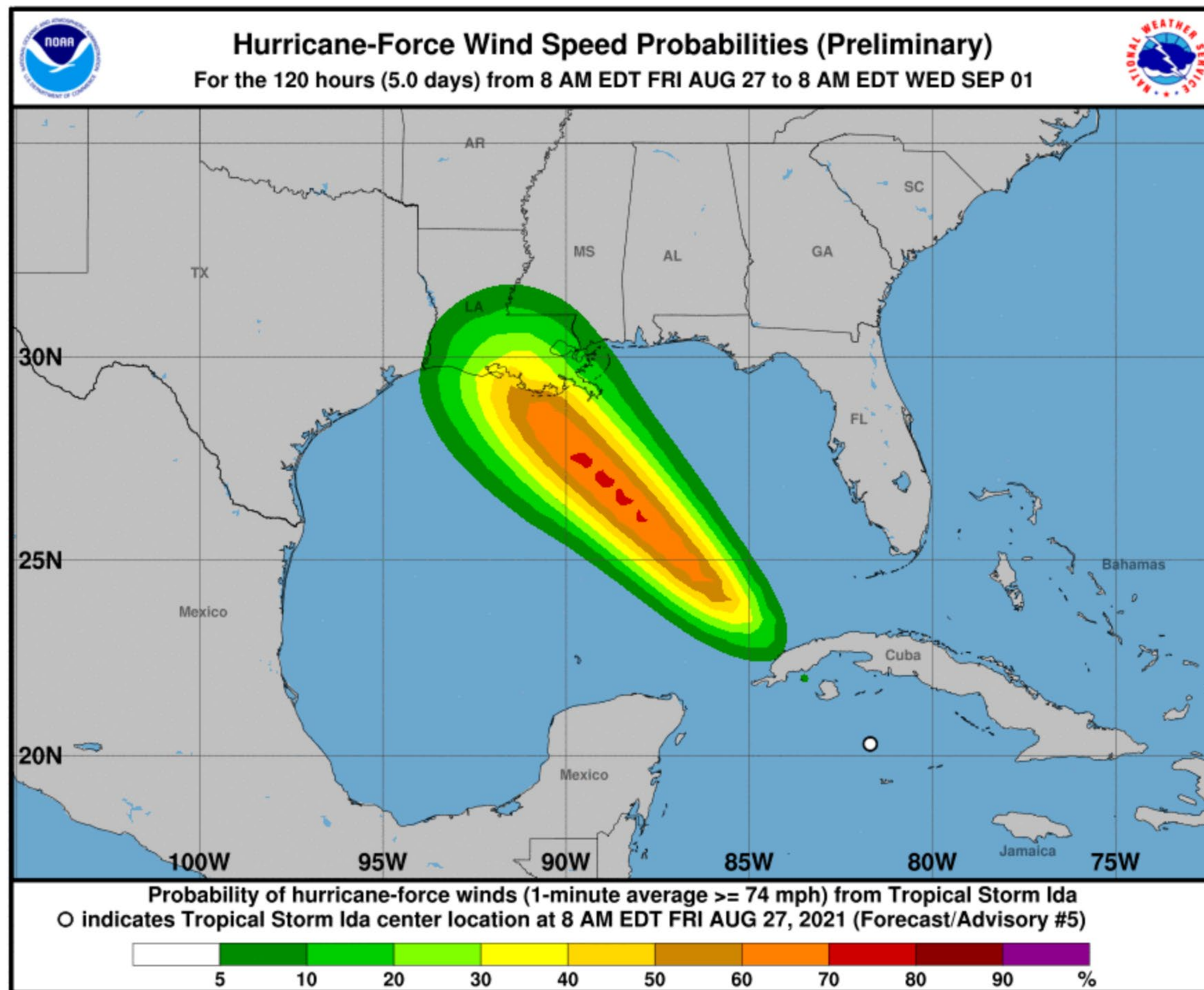
South Central Louisiana: 70-100%

Central Louisiana: 50-70%



Hurricane Wind Speed Probabilities

Tropical Storm Ida



Southeast Texas: $<5\%$

East Texas: $<5\%$

Southwest Louisiana: 5-20%

South Central Louisiana: 20-50%

Central Louisiana: 5-20%

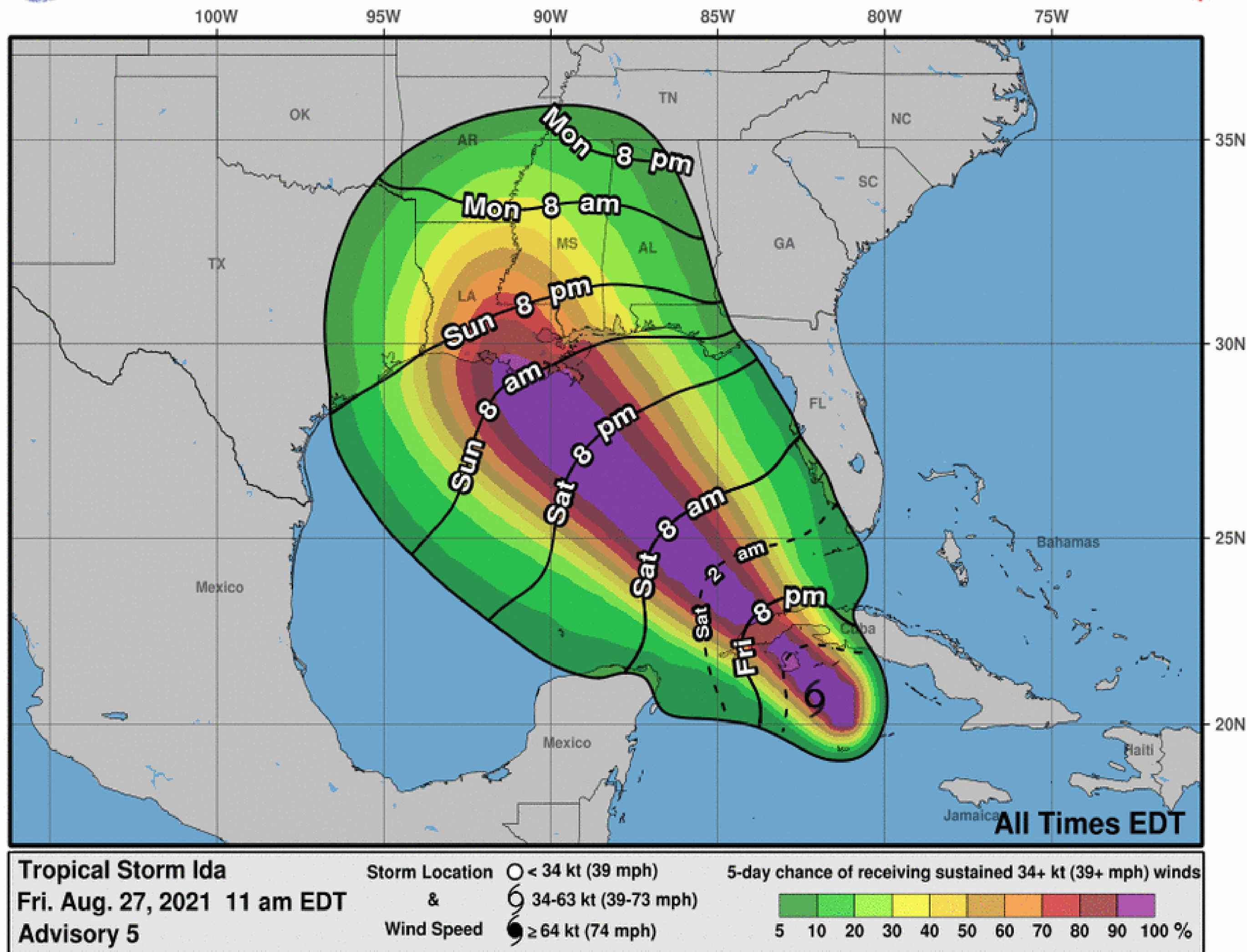


Timing of Tropical Storm Winds

Tropical Storm Ida



Most Likely Arrival Time of Tropical-Storm-Force Winds



Southwest Louisiana: Sunday evening

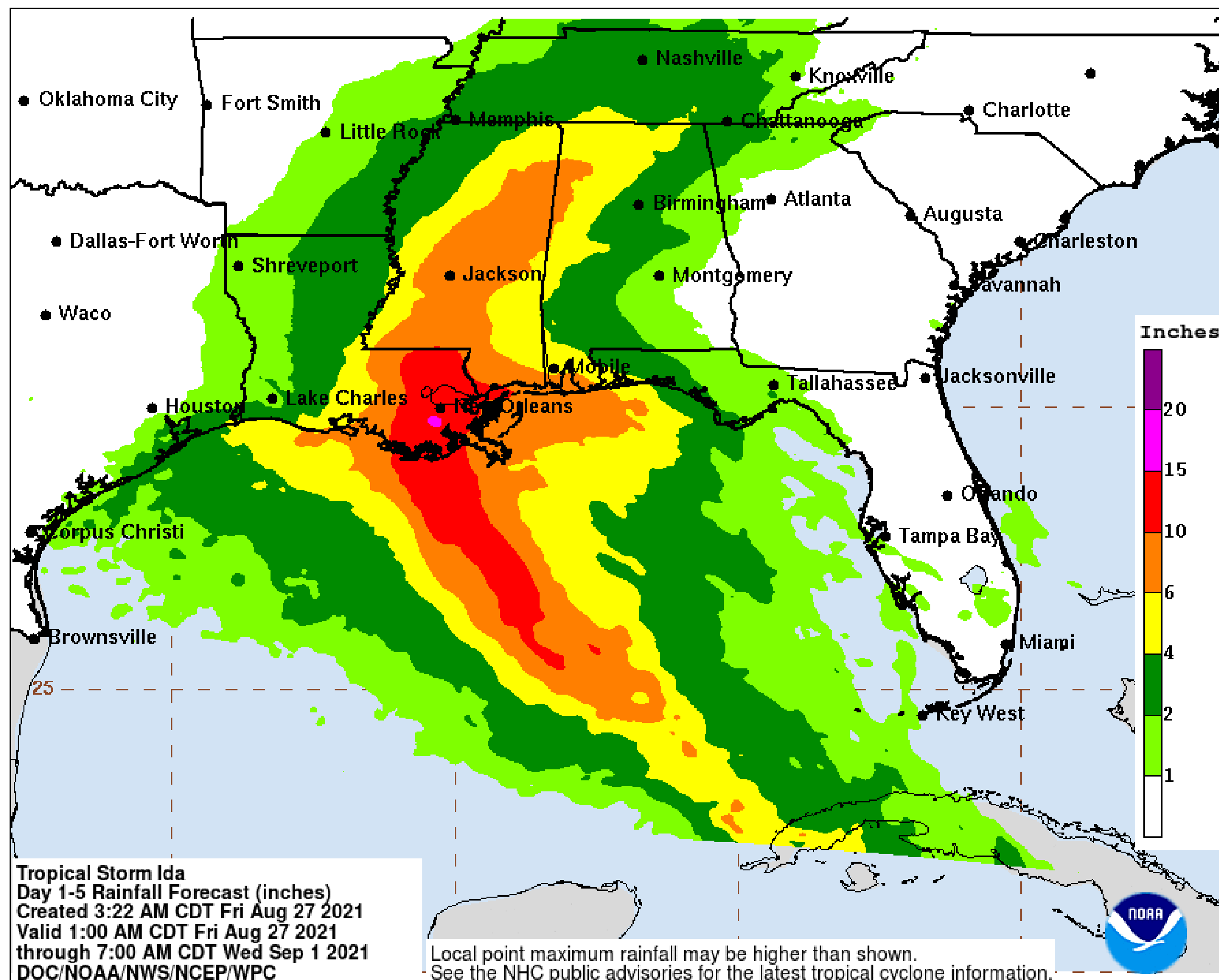
South Central Louisiana: Sunday midday

Central Louisiana: Sunday evening



Storm Total Rainfall Through Wednesday Morning

Tropical Storm Ida



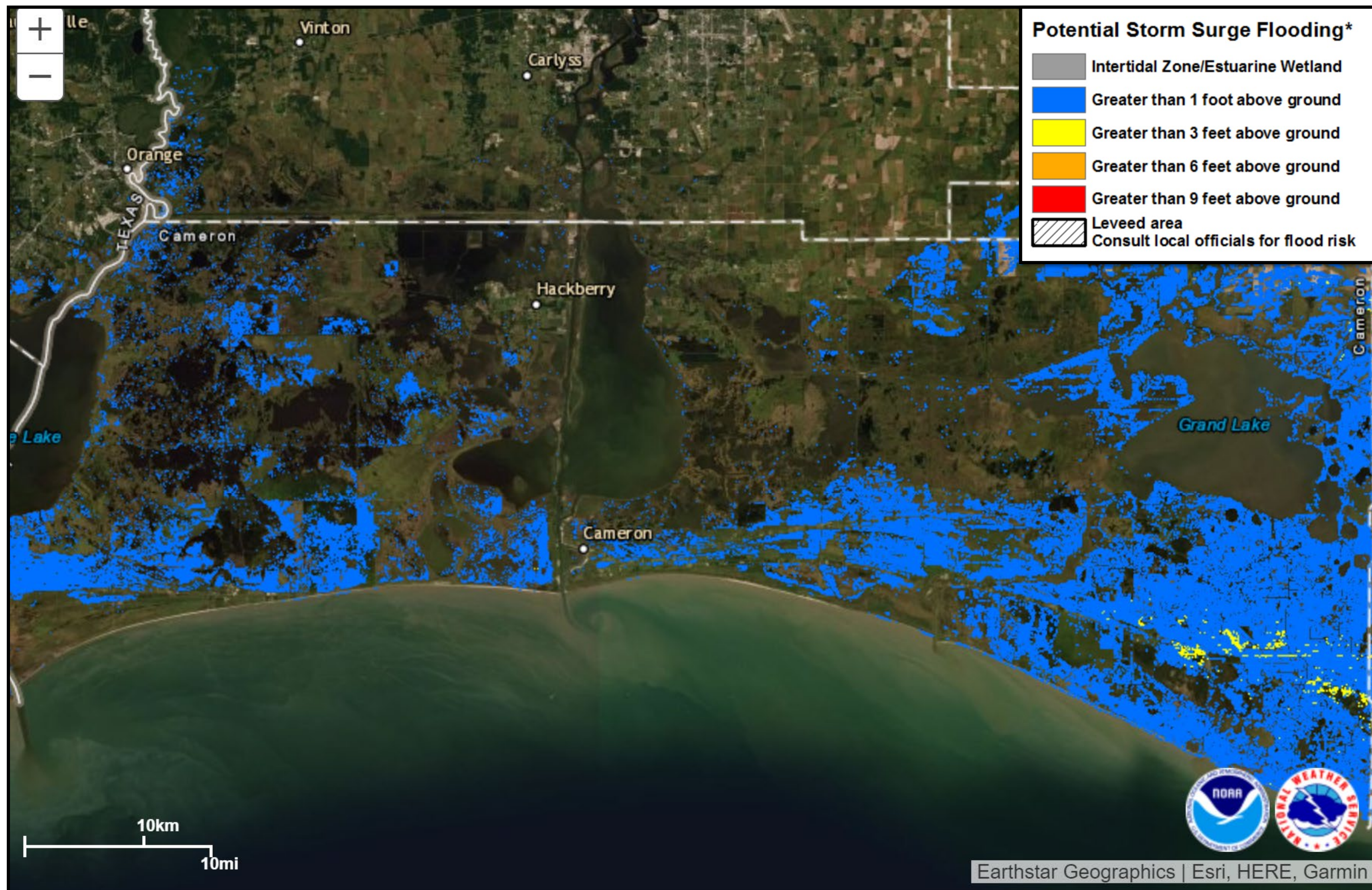
- **Southeast Texas: 1-3"**
- **East Texas: <1"**
- **Southwest Louisiana: 1-3"**
- **South Central Louisiana: 4-10"**
- **Central Louisiana: 1-5"**

Note: There will likely be locally higher amounts



Potential Storm Surge

Tropical Storm Ida

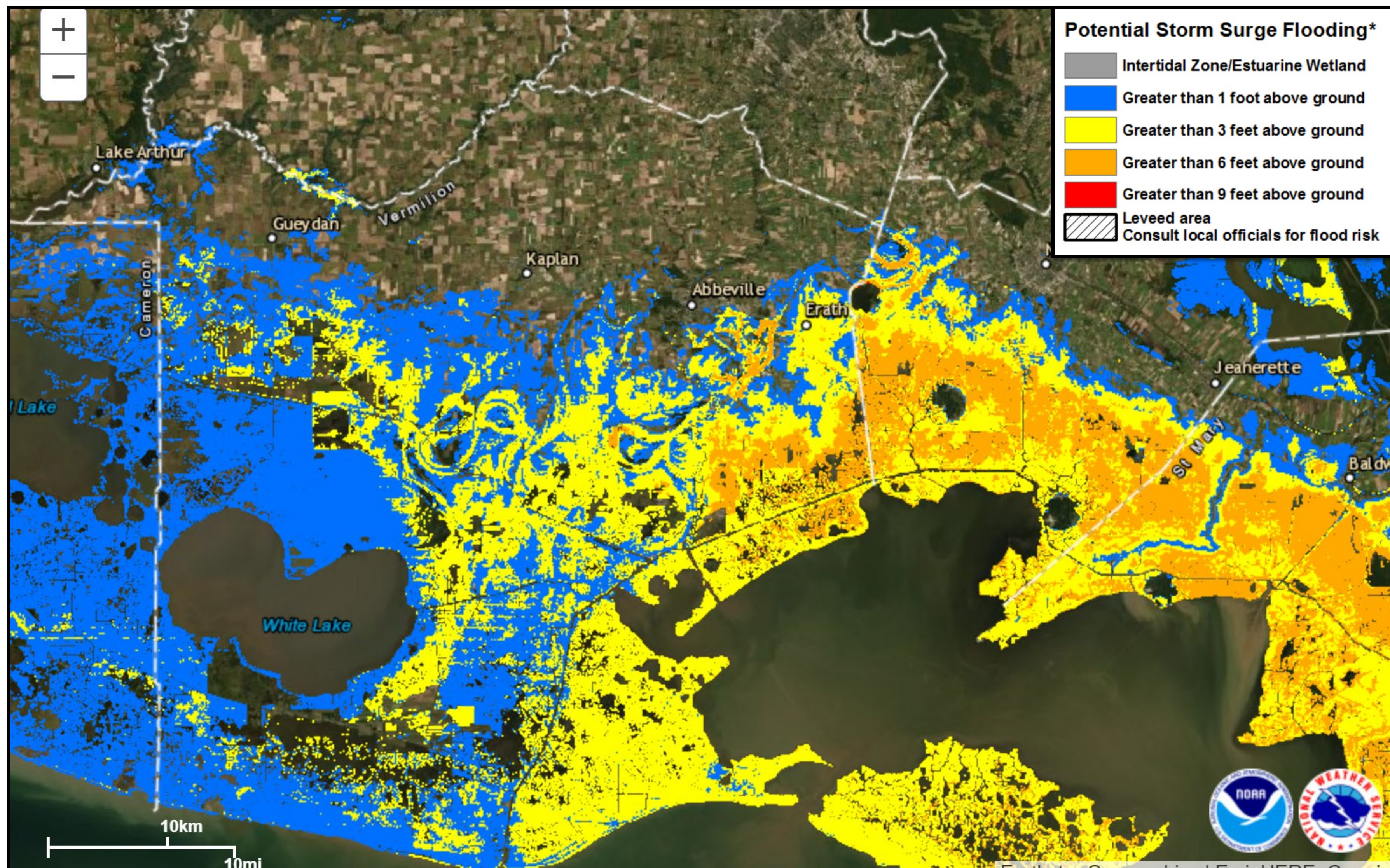


Cameron Parish:
One foot or less.



Potential Storm Surge

Tropical Storm Ida



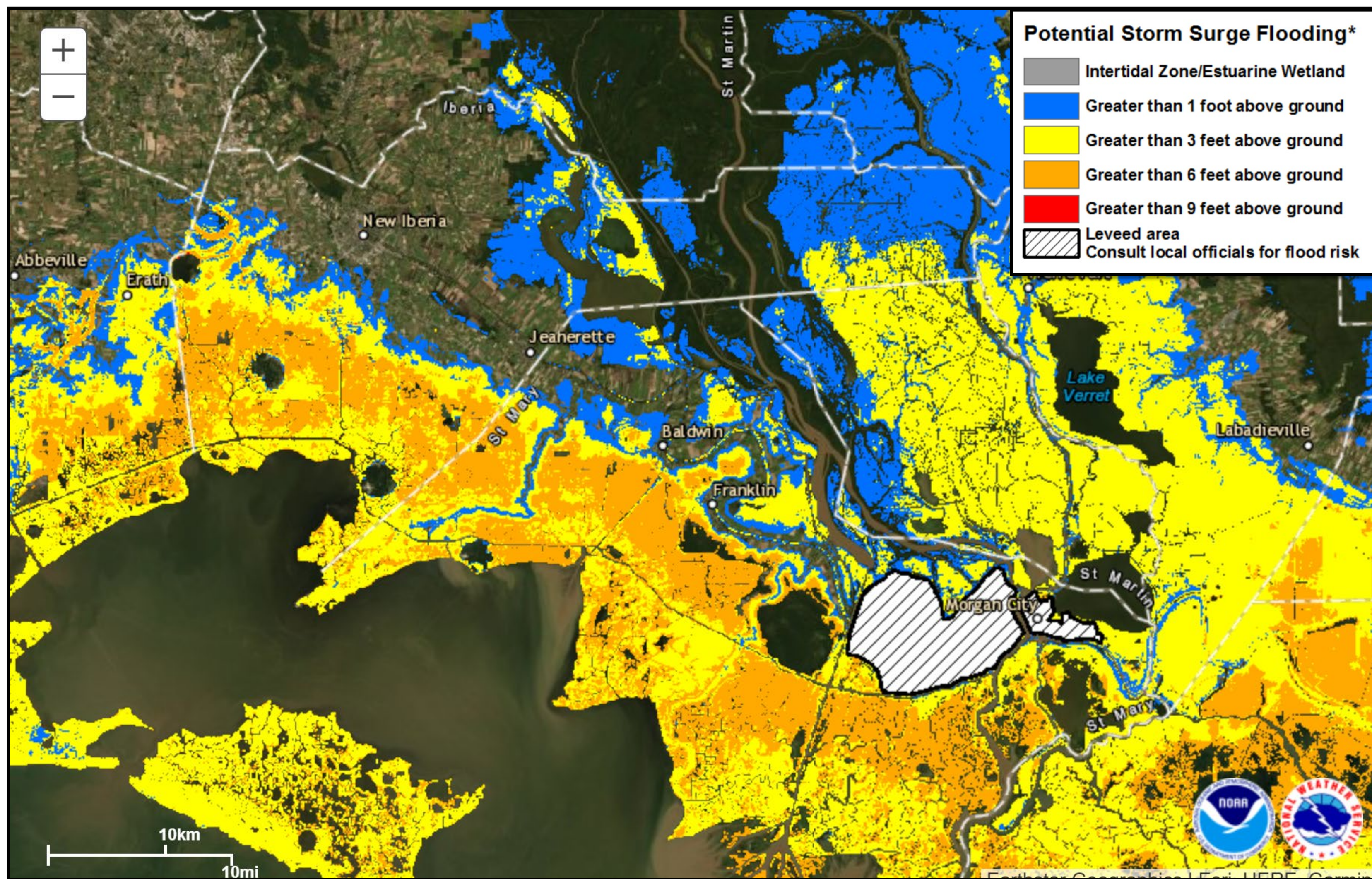
Vermilion Parish:
1 to 3 feet most
places, mainly south
of Hwy 14.

Exception is Hwy 14
near
Erath/Delcambre
area where 1-7 feet
is possible.



Potential Storm Surge

Tropical Storm Ida



Iberia Parish:

1 to 7 feet most places,
mainly south of Hwy 14
and US 90.

Exception is Hwy 14 near
Delcambre area where 1-
7 feet is possible.



Weather Impacts

Tropical Storm Ida

	Max Winds	Rainfall	Storm Surge	Tornado Threat
Southeast Texas	30-50 mph	1-3"	1 foot	Very low
East Texas	30-50 mph	<1"	n/a	Very low
Southwest Louisiana	40-60 mph	1-3"	1 foot	Low
South Central Louisiana	60-100 mph	4-10"	1-7 feet	Medium
Central Louisiana	40-60 mph	1-5"	n/a	Low

Southeast Texas: Hardin, Jefferson, Orange

East Texas: Tyler, Jasper, Newton

Southwest Louisiana: Allen, Beauregard, Calcasieu, Cameron, Jeff Davis

South Central Louisiana: Acadia, Evangeline, Iberia, Lafayette, St. Landry, St. Martin, St. Mary, Vermilion

Central Louisiana: Avoyelles, Rapides, Vernon

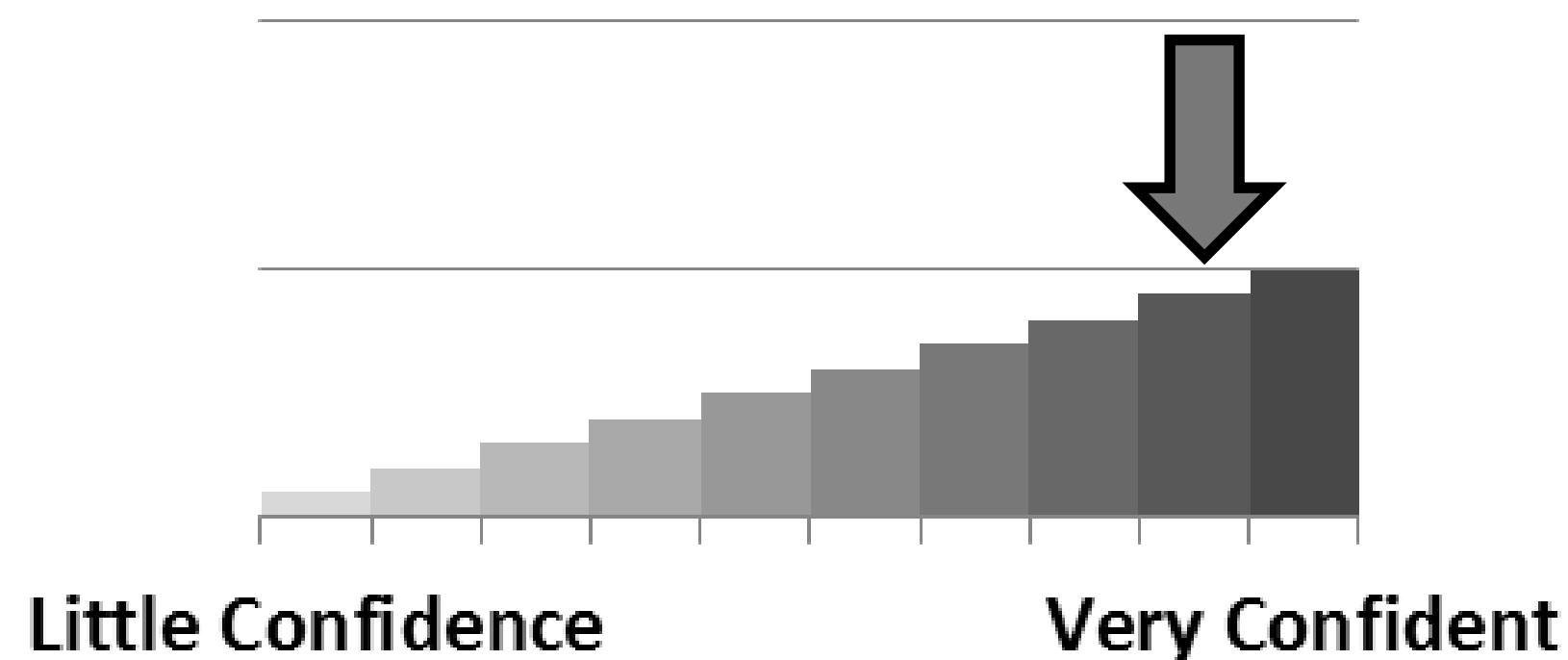


Key Take-Aways

Tropical Storm Ida

- A major hurricane is expected to hit the Louisiana coast late Sunday or early Monday. The highest risk area is between Intracoastal City and Grand Isle.
- Life threatening storm surge, damaging hurricane force winds, heavy rains and tornadoes are all risks with this system. Typically the worst parts of the hurricane are along and to the east of where it makes landfall.

Forecast Confidence





There is high confidence this system will make landfall in Louisiana.


There is high confidence this system will cause life threatening storm surge and damaging hurricane force winds.





Next Briefing: Friday 4:00 PM CDT Method: Webinar


**Web:** <http://weather.gov/lakecharles>

**Phone:** (337) 477-5285 x1

**E-mail:** roger.erickson@noaa.gov

**Facebook:** NWSLakeCharles

**Twitter:** NWSLakeCharles

**YouTube:** NWSLakeCharles

For the latest graphics and information go to: www.hurricanes.gov or weather.gov/lch/tropic