



Hurricane Ida BRIEFING

4:00 PM CDT
Friday, August 27, 2021

What has changed: Ida strengthens some more.

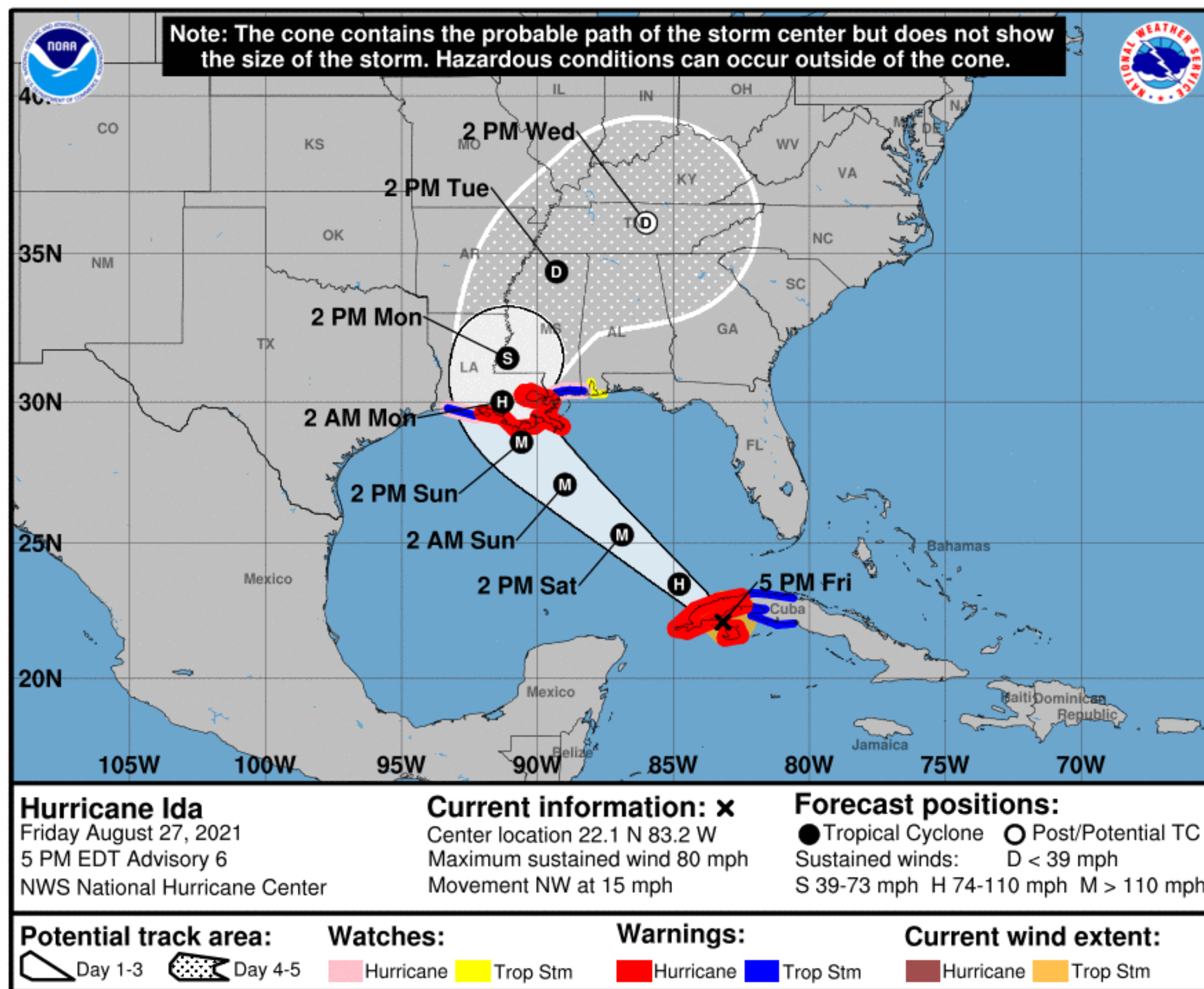
Next Briefing: Friday, August 27 at 10 pm CDT

Disclaimer: The information contained within is time-sensitive. Do not use after 10:00 pm CDT Friday.



Situation Overview

Hurricane Ida



NOTE: Do not focus on the exact track.
Impacts can occur well outside the area enclosed by the cone.

4:00 PM CDT Fri Aug 27

Location: 22.1°N 83.2°W

Moving: *NW at 15 mph*

Min pressure: *985 mb*

Max sustained: *80 mph*

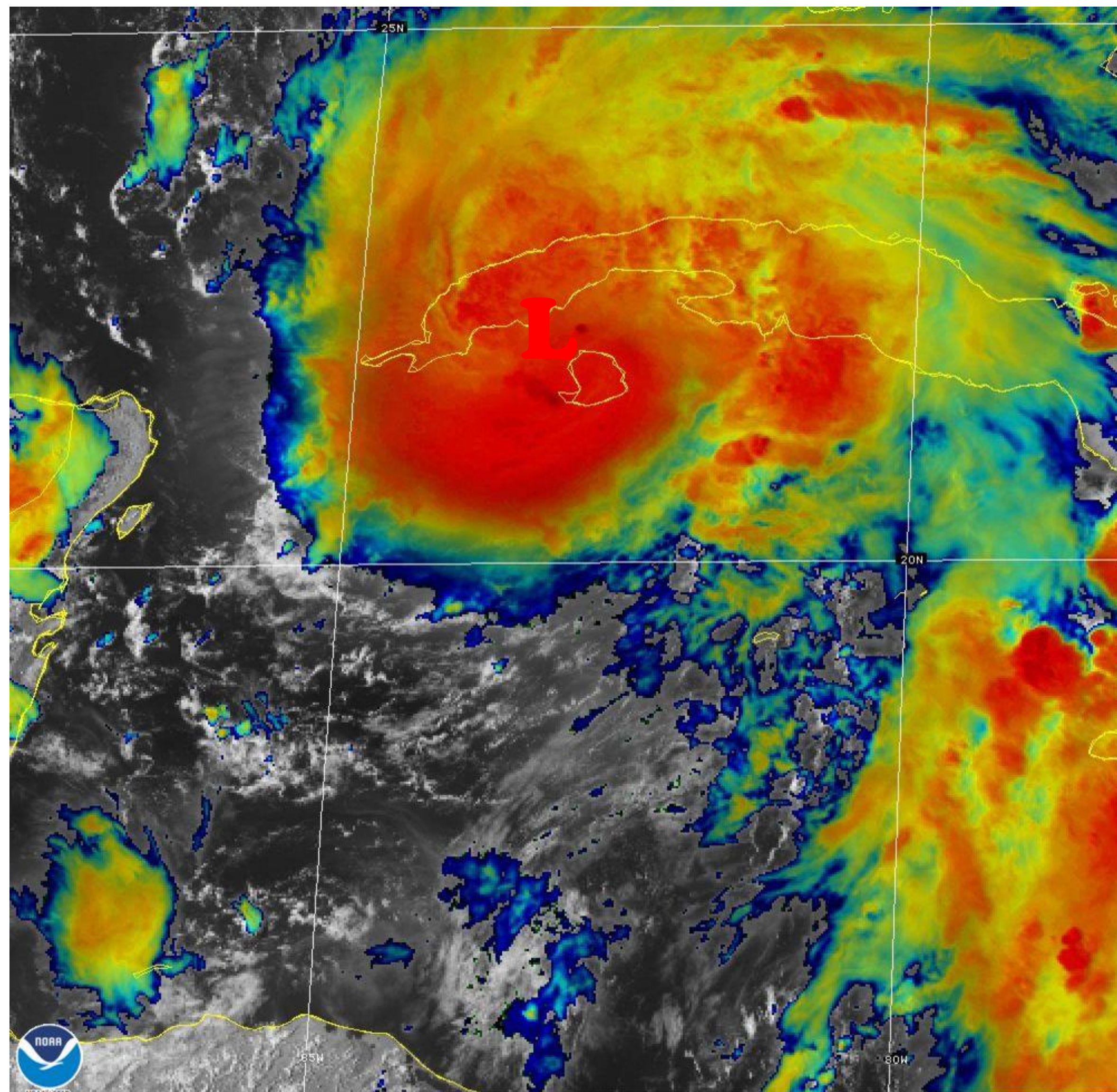
722 miles from Morgan City, LA

- Ida is now a hurricane.
- As Ida moves across the Gulf of Mexico, it is forecast to strengthen rapidly to a major (category 3 or stronger) hurricane.



Current Satellite View

Hurricane Ida



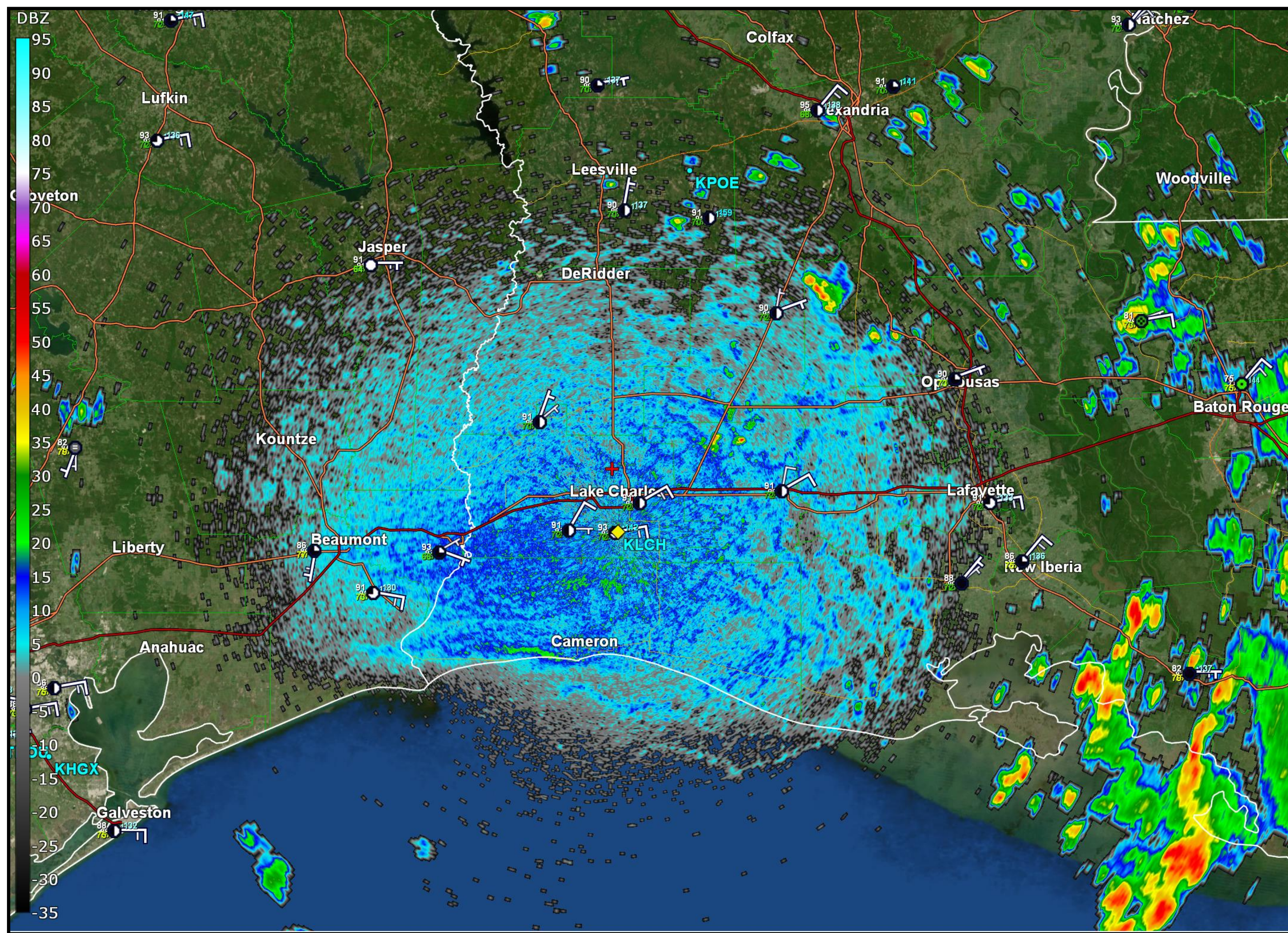
27 Aug 2021 19:57Z NOAA/NESDIS/STAR GOES-East Sandwich

- The satellite view has dramatically improved today, showing less influence from wind shear.
- After Ida moves past Cuba, it will strengthen even more later tonight through landfall in Louisiana.



Current Radar View

Hurricane Ida

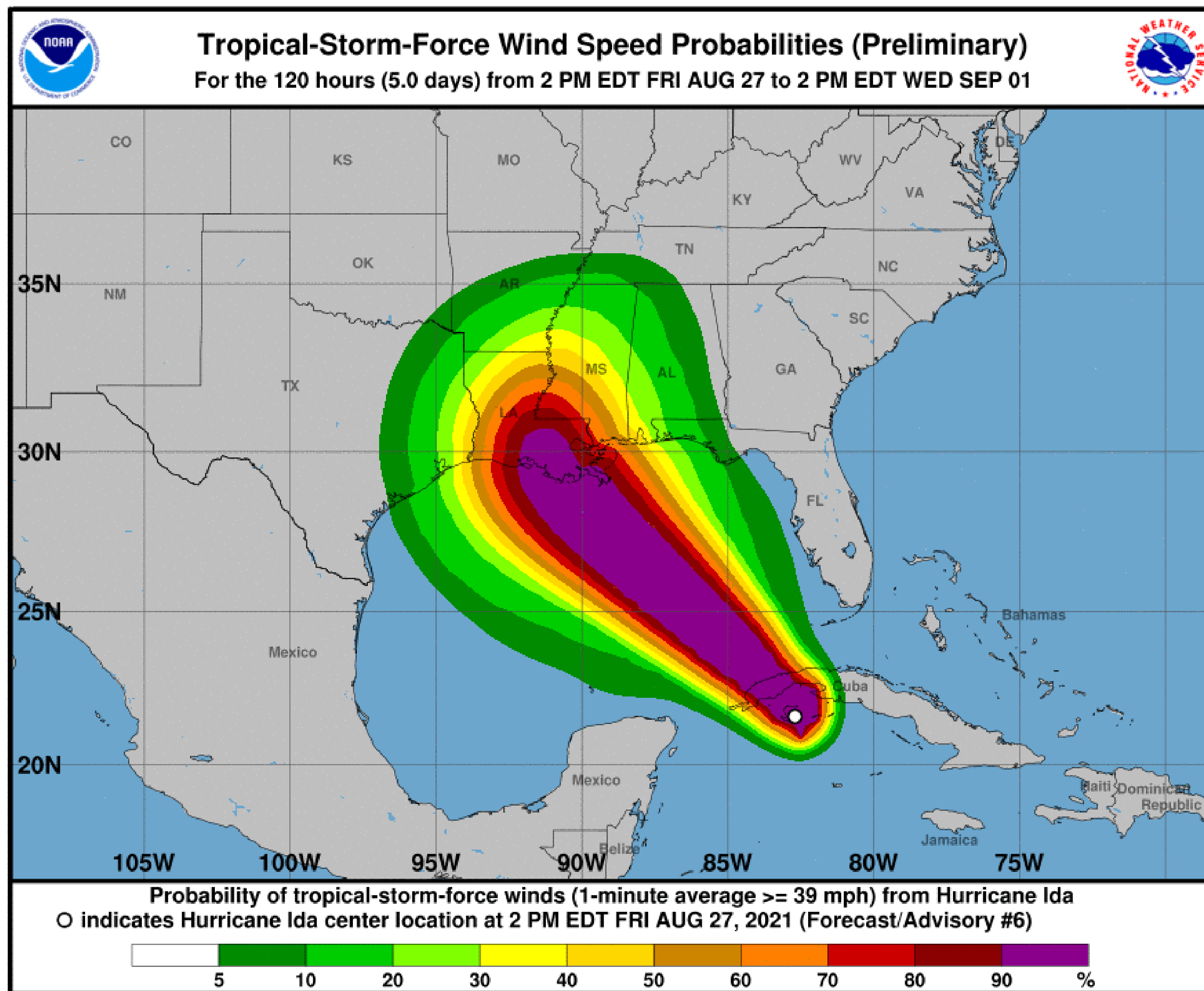


- Scattered showers and thunderstorms are moving west across our region.
- This activity should weaken and dissipate this evening.



Tropical Storm Wind Speed Probabilities

Hurricane Ida



Southeast Texas: 20-50%

East Texas: 20-50%

Southwest Louisiana: 50-70%

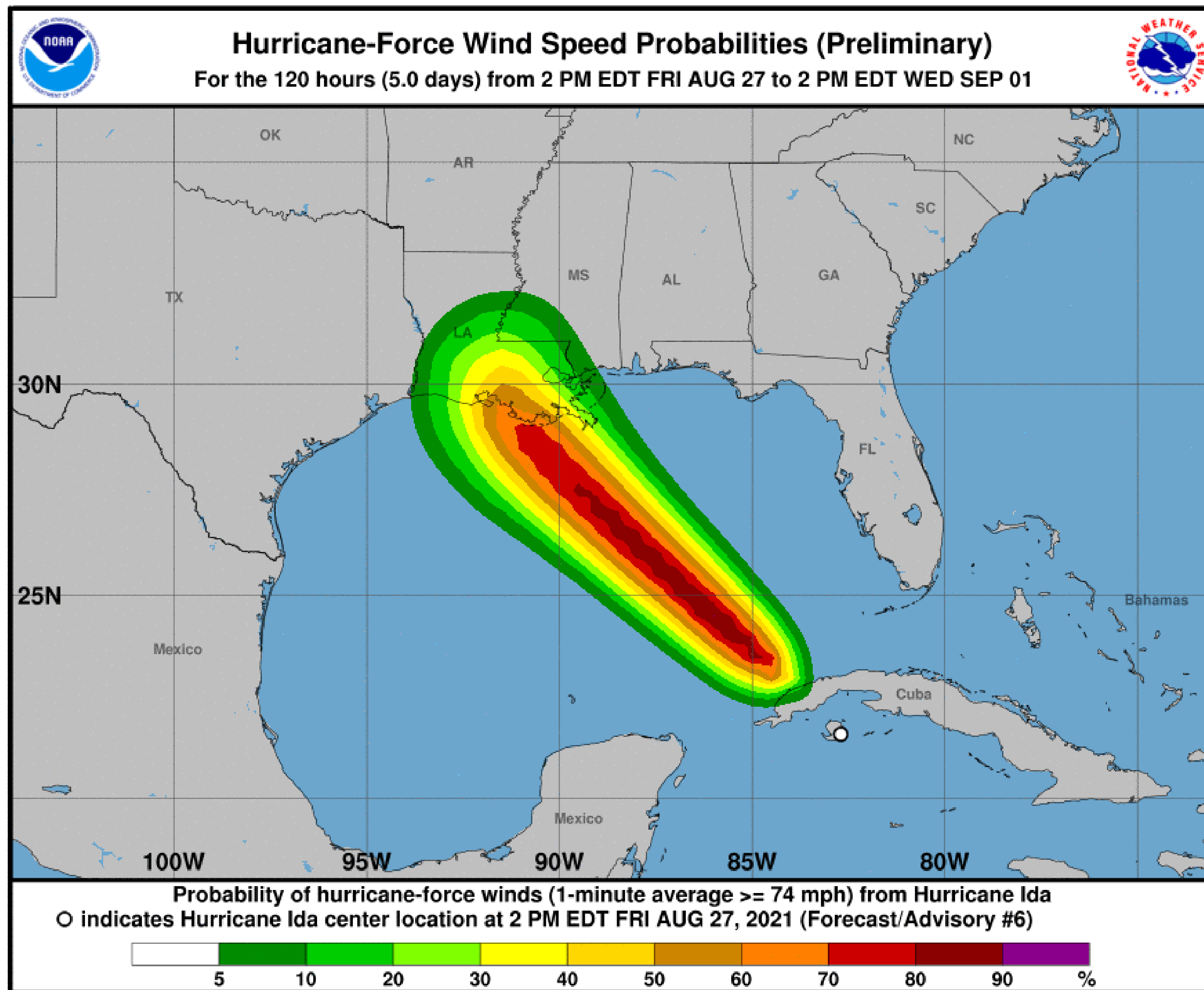
South Central Louisiana: 70-100%

Central Louisiana: 50-80%



Hurricane Wind Speed Probabilities

Hurricane Ida



Southeast Texas: $<5\%$

East Texas: $<5\%$

Southwest Louisiana: 5-20%

South Central Louisiana: 30-60%

Central Louisiana: 5-30%

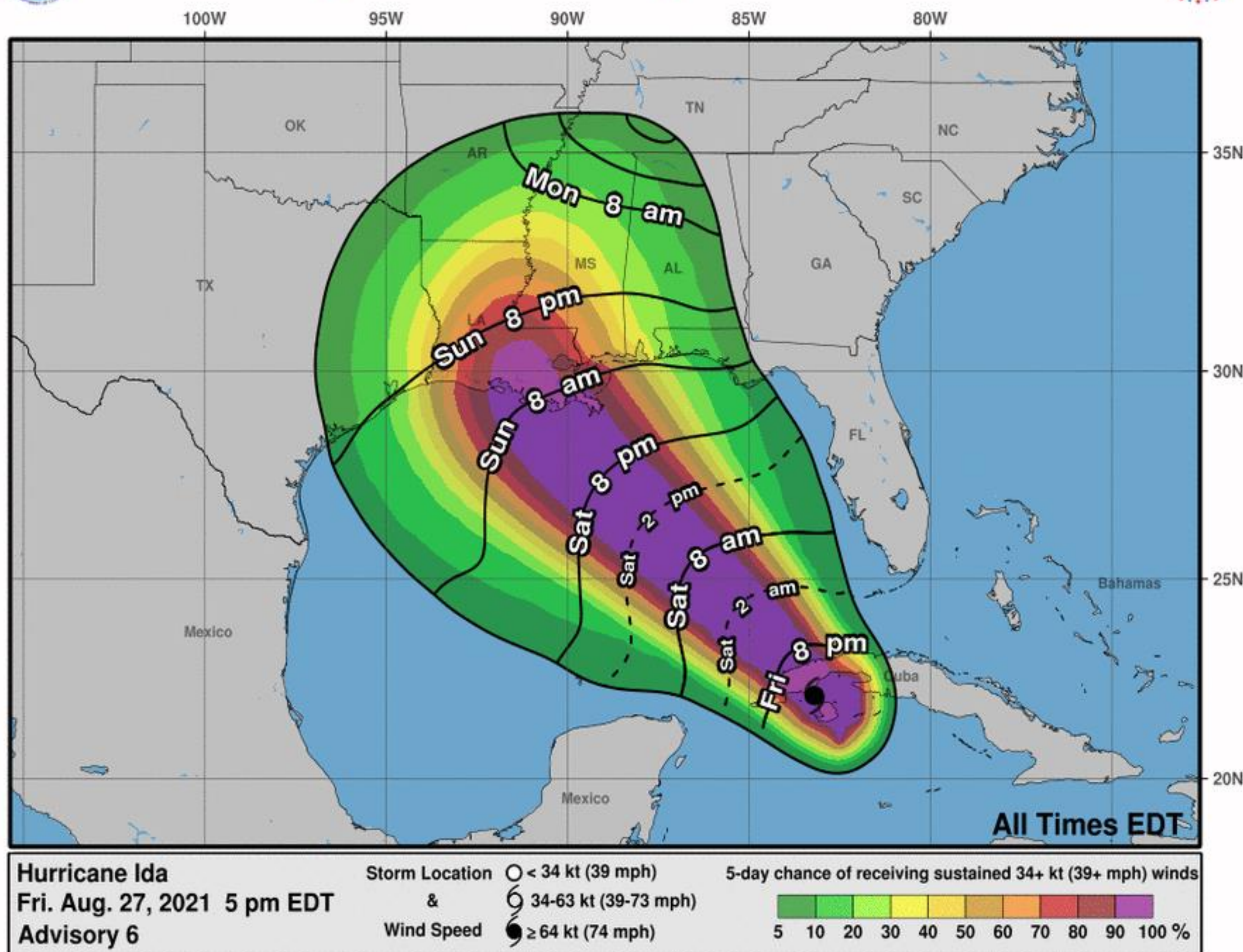


Timing of Tropical Storm Winds

Hurricane Ida



Most Likely Arrival Time of Tropical-Storm-Force Winds



Southwest Louisiana: Sunday evening

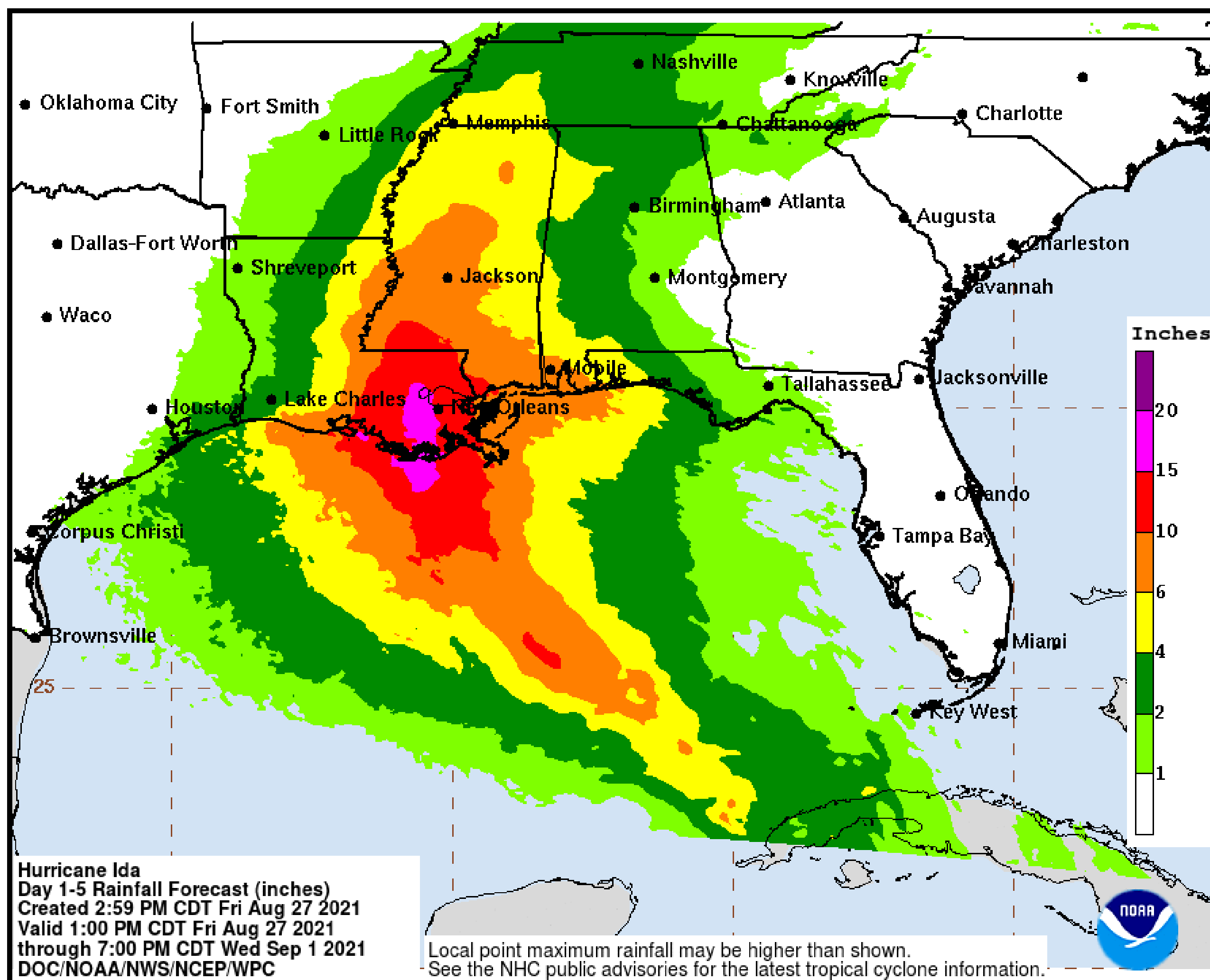
South Central Louisiana: Sunday morning

Central Louisiana: Sunday evening



Storm Total Rainfall Through Wednesday Morning

Hurricane Ida



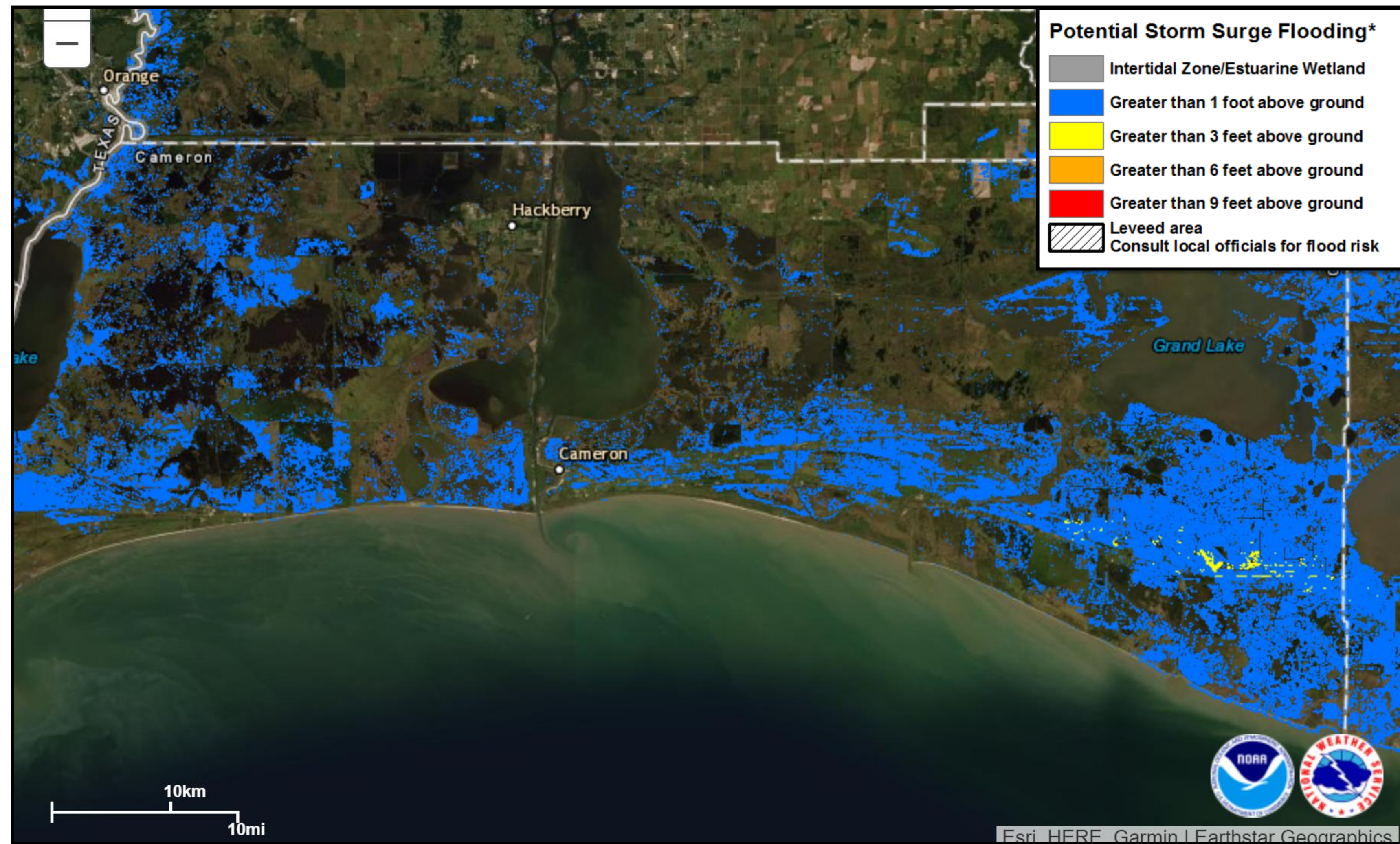
- **Southeast Texas: 1-3"**
- **East Texas: <1"**
- **Southwest Louisiana: 1-5"**
- **South Central Louisiana: 4-10"**
- **Central Louisiana: 1-5"**

Note: There will likely be locally higher amounts



Potential Storm Surge

Hurricane Ida

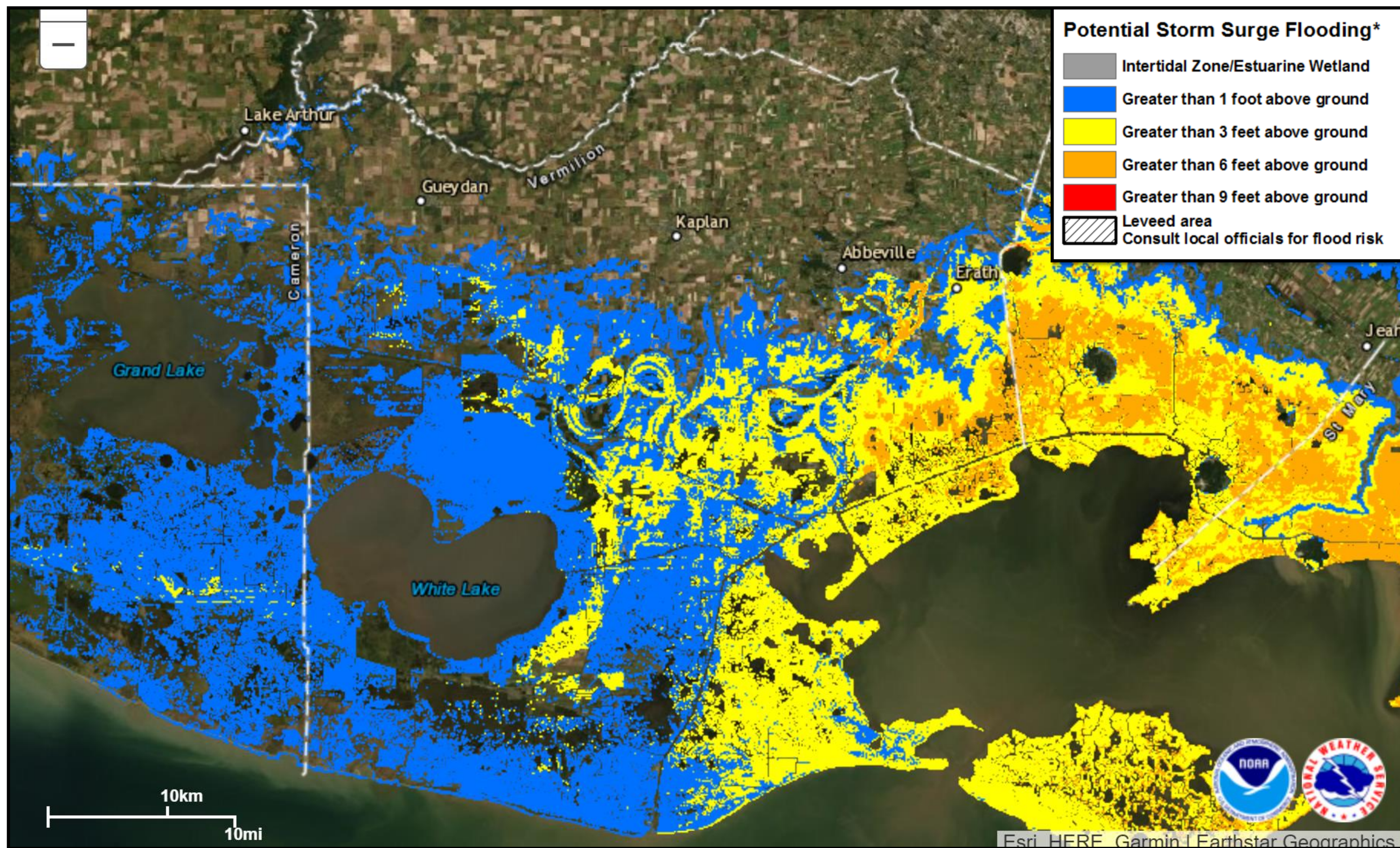


Cameron Parish:
One foot or less.



Potential Storm Surge

Hurricane Ida



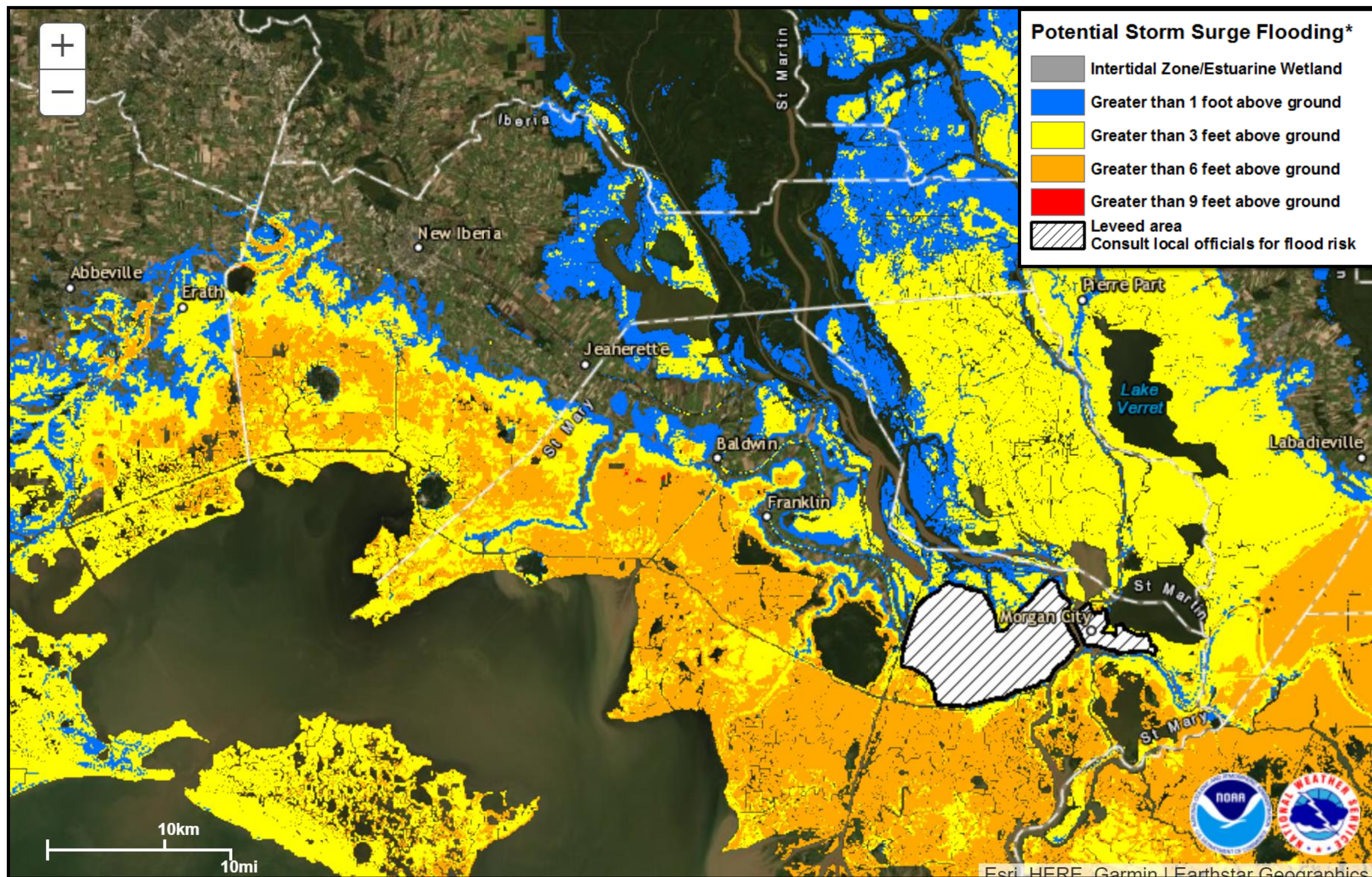
Vermilion Parish:
1 to 3 feet most
places, mainly south
of Hwy 14.

Exception is Hwy 14
near
Erath/Delcambre
area where 1-7 feet
is possible.



Potential Storm Surge

Hurricane Ida



Iberia and St. Mary
Parishes:
1 to 7 feet most places,
mainly south of Hwy 14
and US 90.

Exception is Hwy 14
near Delcambre area
where 1-7 feet is
possible.



Weather Impacts

Hurricane Ida

	Max Winds	Rainfall	Storm Surge	Tornado Threat
Southeast Texas	20-40 mph	1-3"	1 foot	Very low
East Texas	20-40 mph	<1"	n/a	Very low
Southwest Louisiana	30-60 mph	1-5"	1 foot	Low
South Central Louisiana	50-100 mph	4-10"	1-7 feet	Medium
Central Louisiana	30-60 mph	1-5"	n/a	Low

Southeast Texas: Hardin, Jefferson, Orange

East Texas: Tyler, Jasper, Newton

Southwest Louisiana: Allen, Beauregard, Calcasieu, Cameron, Jeff Davis

South Central Louisiana: Acadia, Evangeline, Iberia, Lafayette, St. Landry, St. Martin, St. Mary, Vermilion

Central Louisiana: Avoyelles, Rapides, Vernon

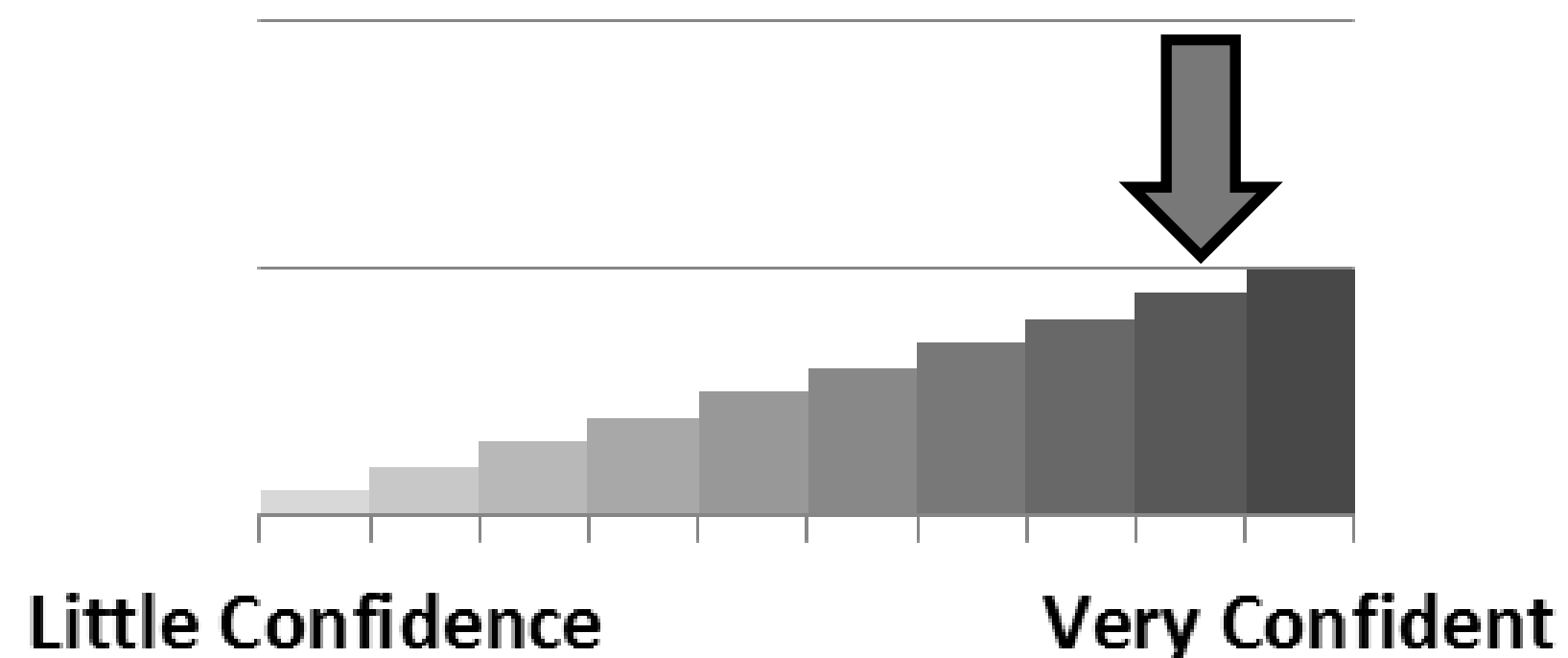


Key Take-Aways

Hurricane Ida

- A major hurricane is expected to hit the Louisiana coast late Sunday or early Monday. The highest risk area is between Intracoastal City and Grand Isle.
- Life threatening storm surge, damaging hurricane force winds, heavy rains and tornadoes are all risks with this system. Typically the worst parts of the hurricane are along and to the east of where it makes landfall.

Forecast Confidence





There is high confidence this system will make landfall in Louisiana.


There is high confidence this system will cause life threatening storm surge and damaging hurricane force winds.





Next Briefing: Friday 10:00 PM CDT Method: Webinar


 **Web:** <http://weather.gov/lakecharles>

 **Phone:** (337) 477-5285 x1

 **E-mail:** roger.erickson@noaa.gov

 **Facebook:** NWSLakeCharles

 **Twitter:** NWSLakeCharles

 **YouTube:** NWSLakeCharles

For the latest graphics and information go to: www.hurricanes.gov or weather.gov/lch/tropic