



Hurricane Ida BRIEFING

10:00 AM CDT
Sunday, August 29, 2021

What has changed: Ida close to the coast as a category 4 hurricane

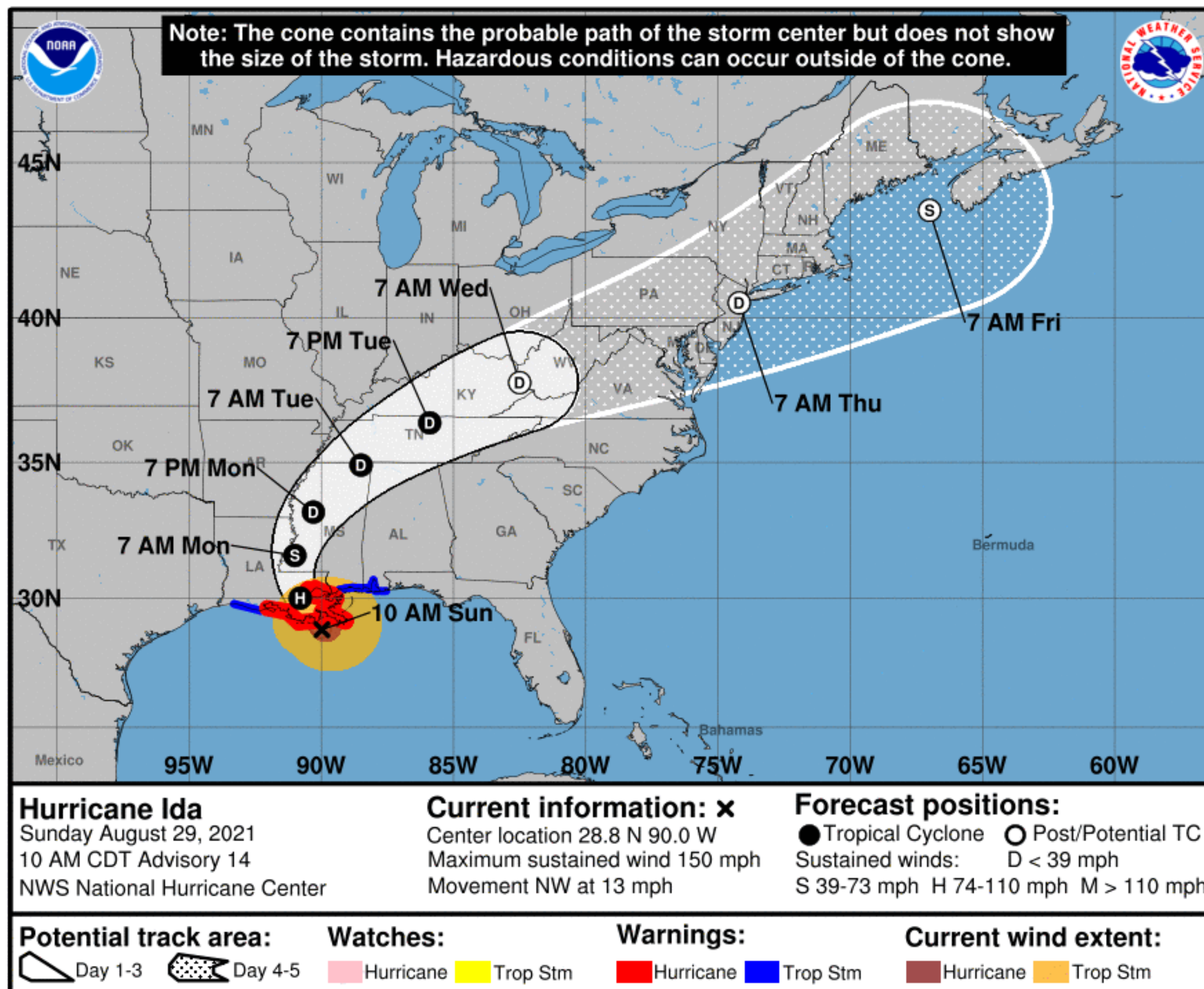
Next Briefing: Sunday, August 29 at 1 pm CDT

Disclaimer: The information contained within is time-sensitive. Do not use after 1:00 pm CDT Sunday.



Situation Overview

Hurricane Ida



10:00 AM CDT Sun Aug 29

Location: $28.8^{\circ}\text{N } 90.0^{\circ}\text{W}$

Moving: *NW at 13 mph*

Min pressure: *933 mb*

Max sustained: *150 mph*

84 miles from Morgan City, LA

- Hurricane force gusts are expected in parts of St. Martin, Iberia, and St. Mary Parishes today.
- Tropical storm force winds are expected in the remainder of south central Louisiana.

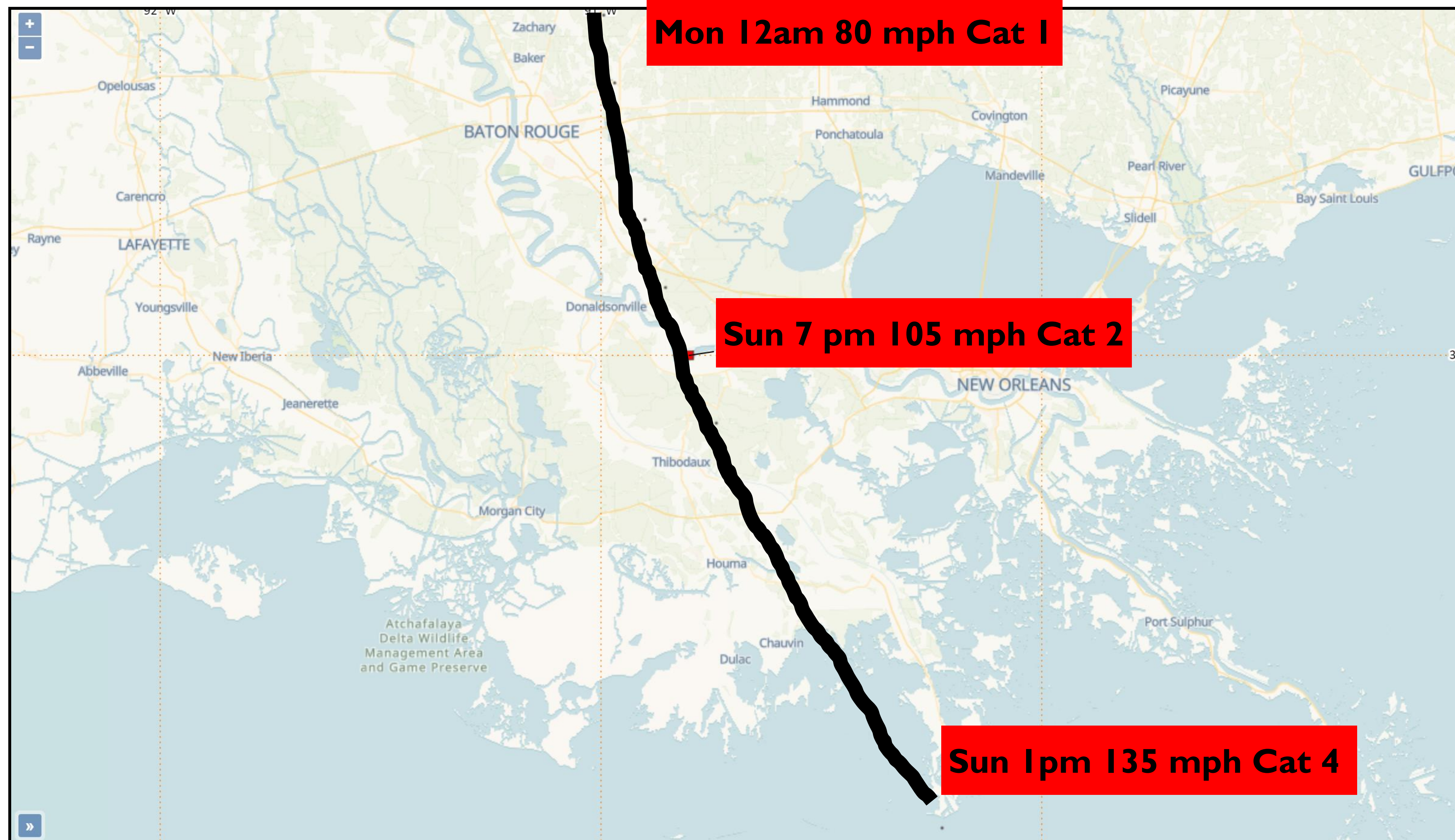
NOTE: Do not focus on the exact track.

Impacts can occur well outside the area enclosed by the cone.



Situation Overview

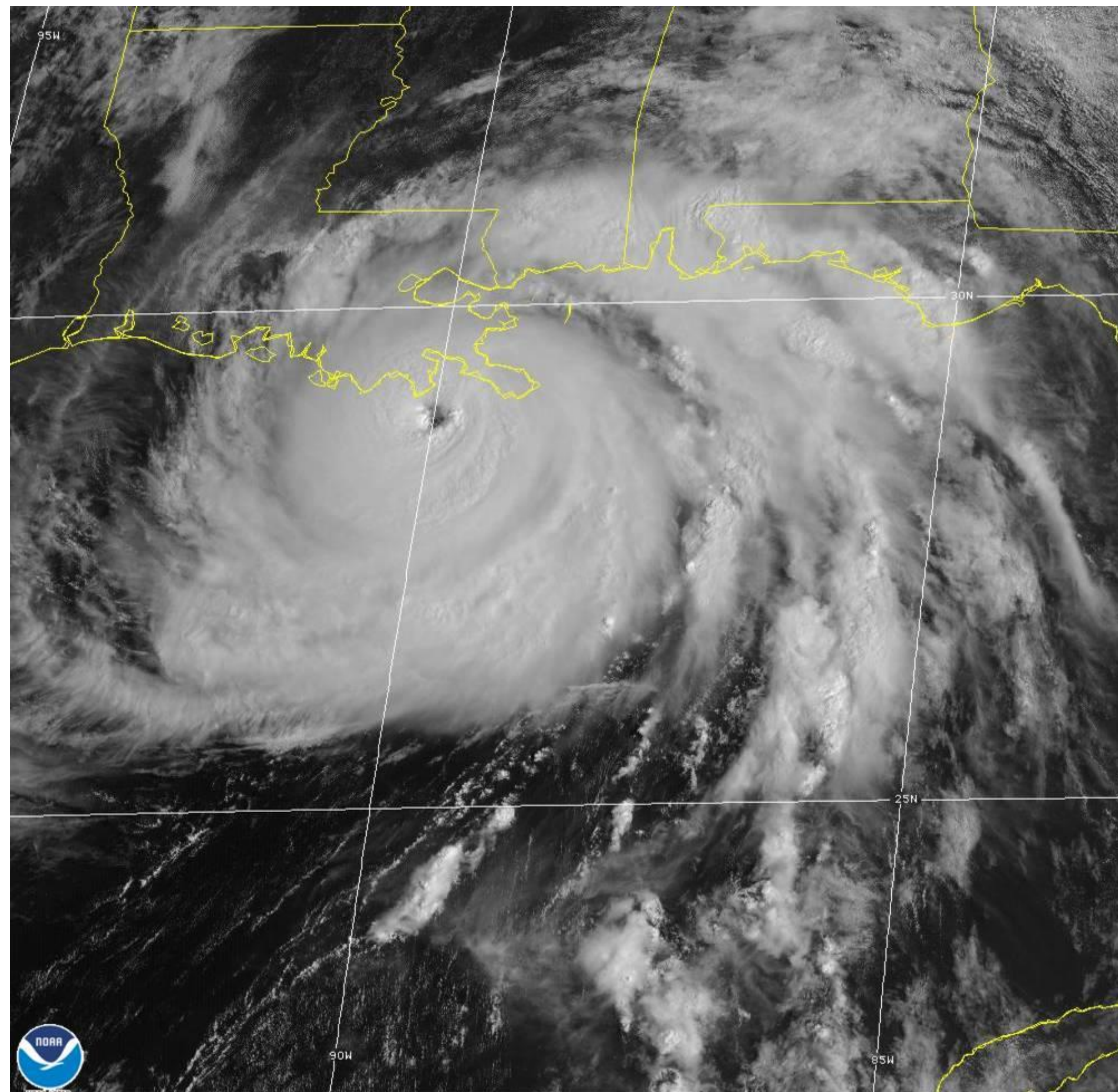
Hurricane Ida





Current Satellite View

Hurricane Ida



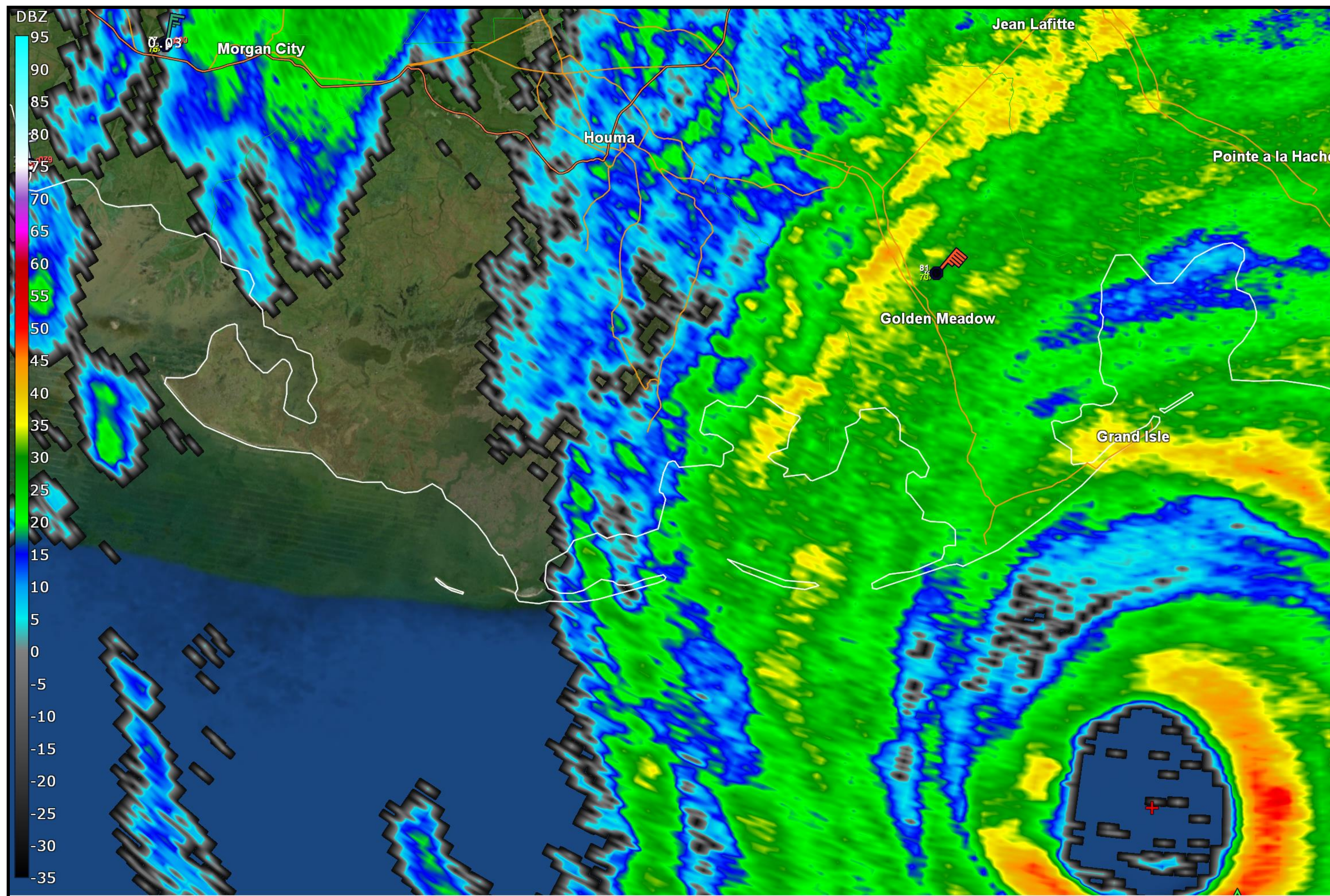
29 Aug 2021 14:45Z NOAA/NESDIS/STAR GOES-East Band 02

- Ida is very symmetric, indicating no inhibitions for strengthening.
- Getting closer to land this morning will cause Ida to slowly weaken.



Current Radar View

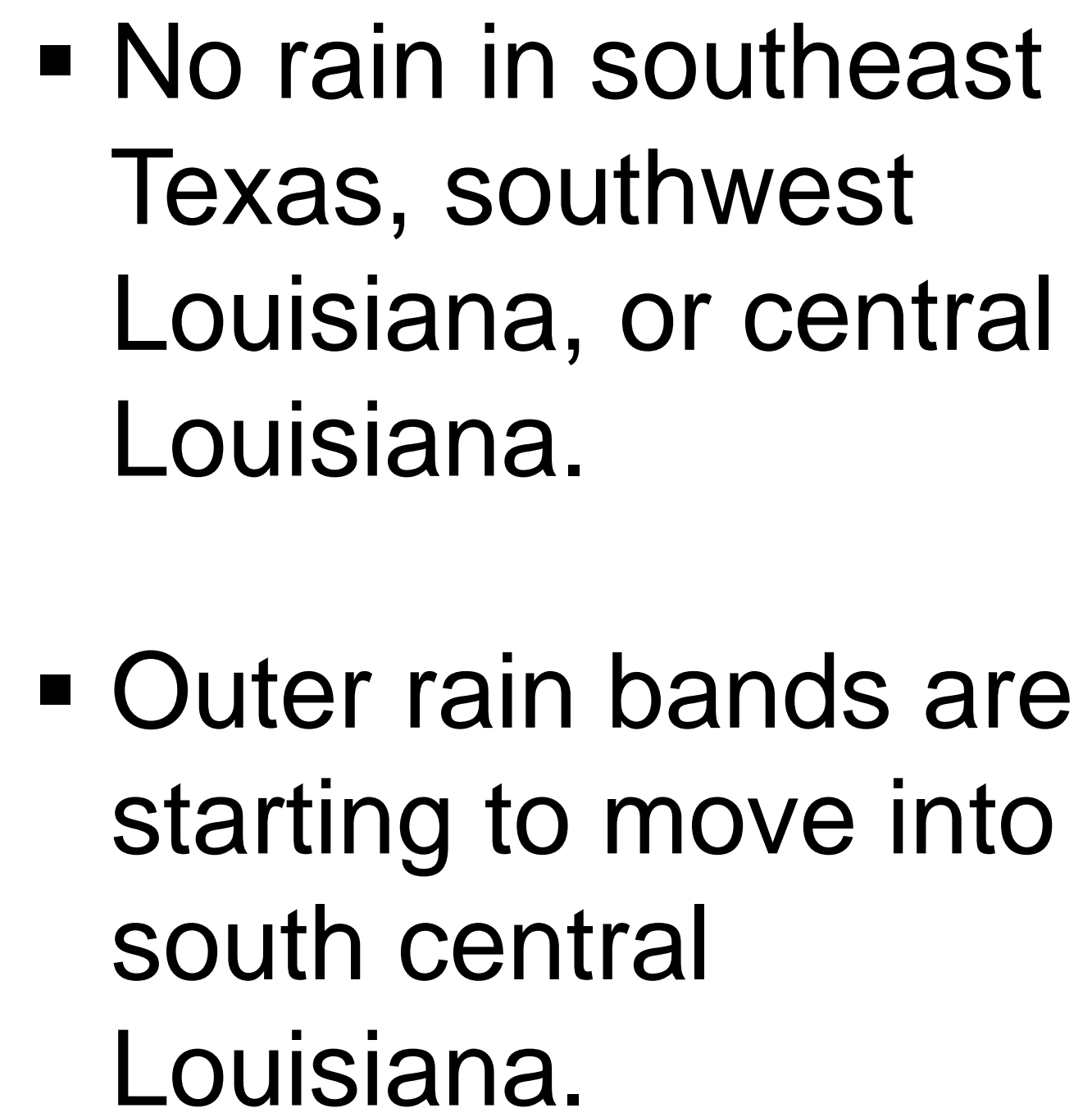
Hurricane Ida



- The eye diameter is 13 to 15 miles across.
- Center of the eye is 25 miles south of Grand Isle.



Hurricane Ida



[illegible]

National Weather Service – Lake Charles



Wind Gust Forecast

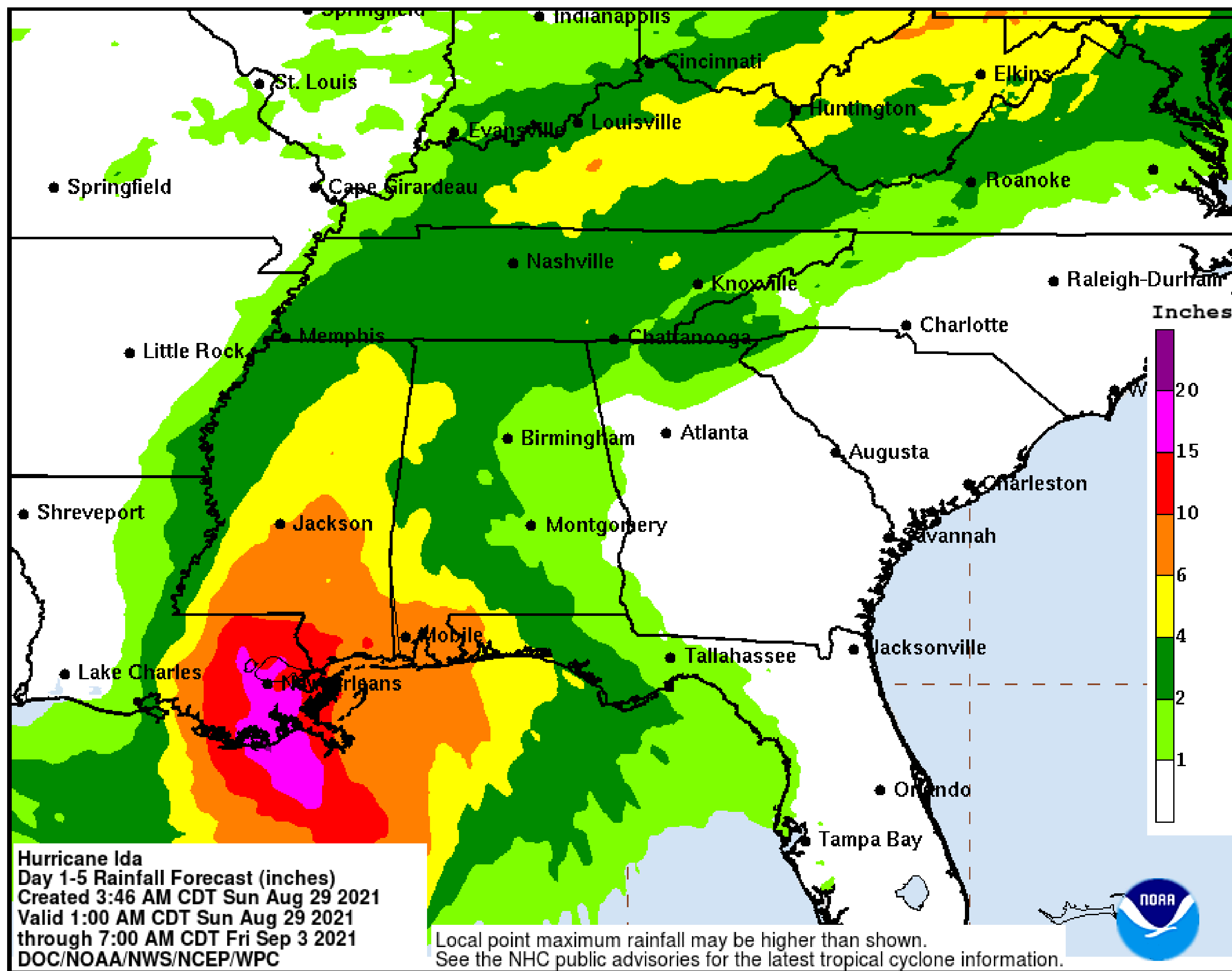
Hurricane Ida

	Sunday				Monday				
	12 pm	3 pm	6 pm	9 pm	12 am	3 am	6 am	9 am	Noon
Acadia	NE 30 mph	N 36 mph	N 43 mph	N 47 mph	NW 45 mph	NW 39 mph	W 33 mph	W 25 mph	W 23 mph
Evangeline	NE 28 mph	NE 31 mph	N 37 mph	N 39 mph	N 39 mph	NW 39 mph	NW 36 mph	W 23 mph	W 23 mph
Iberia	N 39 mph	N 49 mph	N 62 mph	NW 67 mph	W 56 mph	W 49 mph	W 39 mph	W 30 mph	W 31 mph
Lafayette	NE 33 mph	N 39 mph	N 51 mph	N 56 mph	NW 55 mph	W 45 mph	W 39 mph	W 28 mph	W 28 mph
St. Landry	NE 30 mph	NE 36 mph	N 41 mph	N 47 mph	NW 49 mph	NW 45 mph	W 37 mph	W 25 mph	W 23 mph
St. Martin	N 37 mph	N 45 mph	N 56 mph	N 63 mph	NW 53 mph	W 47 mph	W 41 mph	W 30 mph	W 30 mph
St. Mary	N 53 mph	N 70 mph	NW 78 mph	W 67 mph	SW 59 mph	SW 53 mph	SW 41 mph	SW 28 mph	SW 31 mph
Vermilion	N 36 mph	N 43 mph	N 55 mph	NW 55 mph	NW 51 mph	W 43 mph	W 36 mph	W 25 mph	W 28 mph



Storm Total Rainfall Through Friday Morning

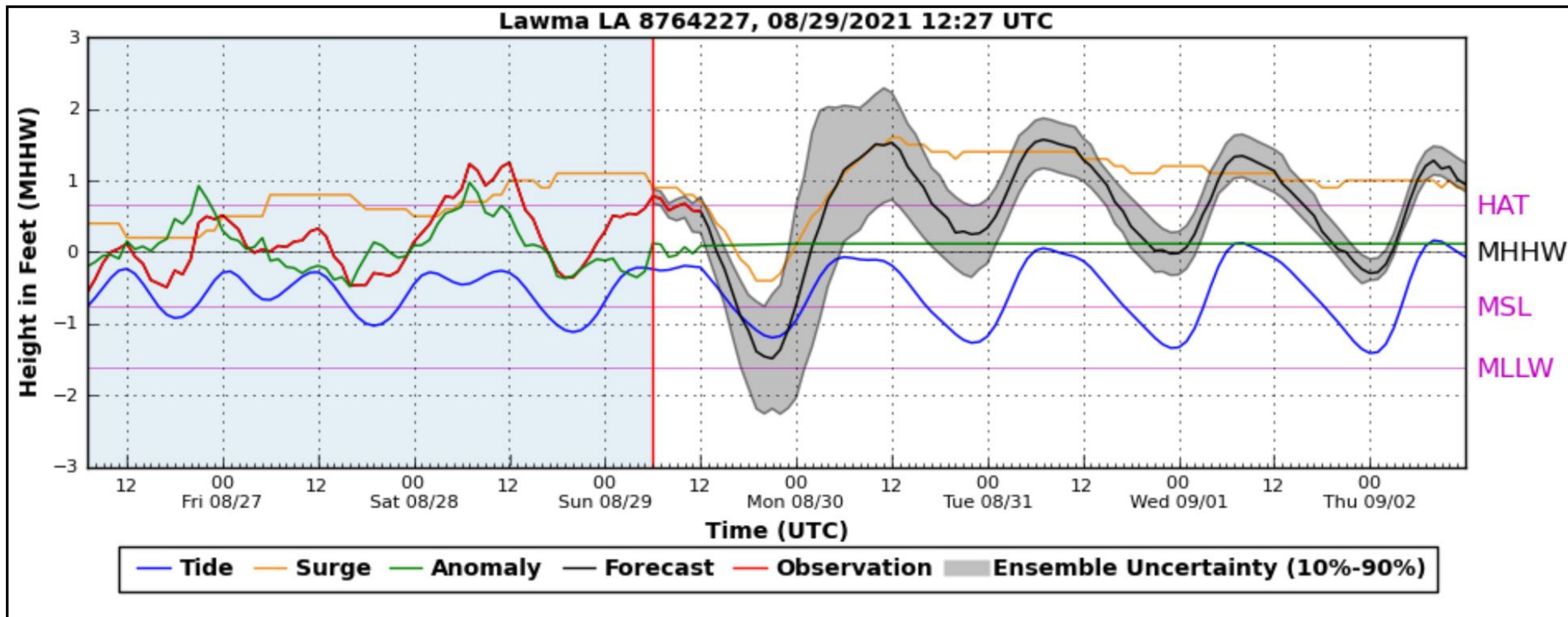
Hurricane Ida





Potential Storm Surge

Hurricane Ida



Timing of elevated tides in Iberia and St. Mary Parishes will be tonight and tomorrow morning between 10 pm and 9 am. Expect Cypremort Point and Burns Point to be flooded 1-2 ft above ground.

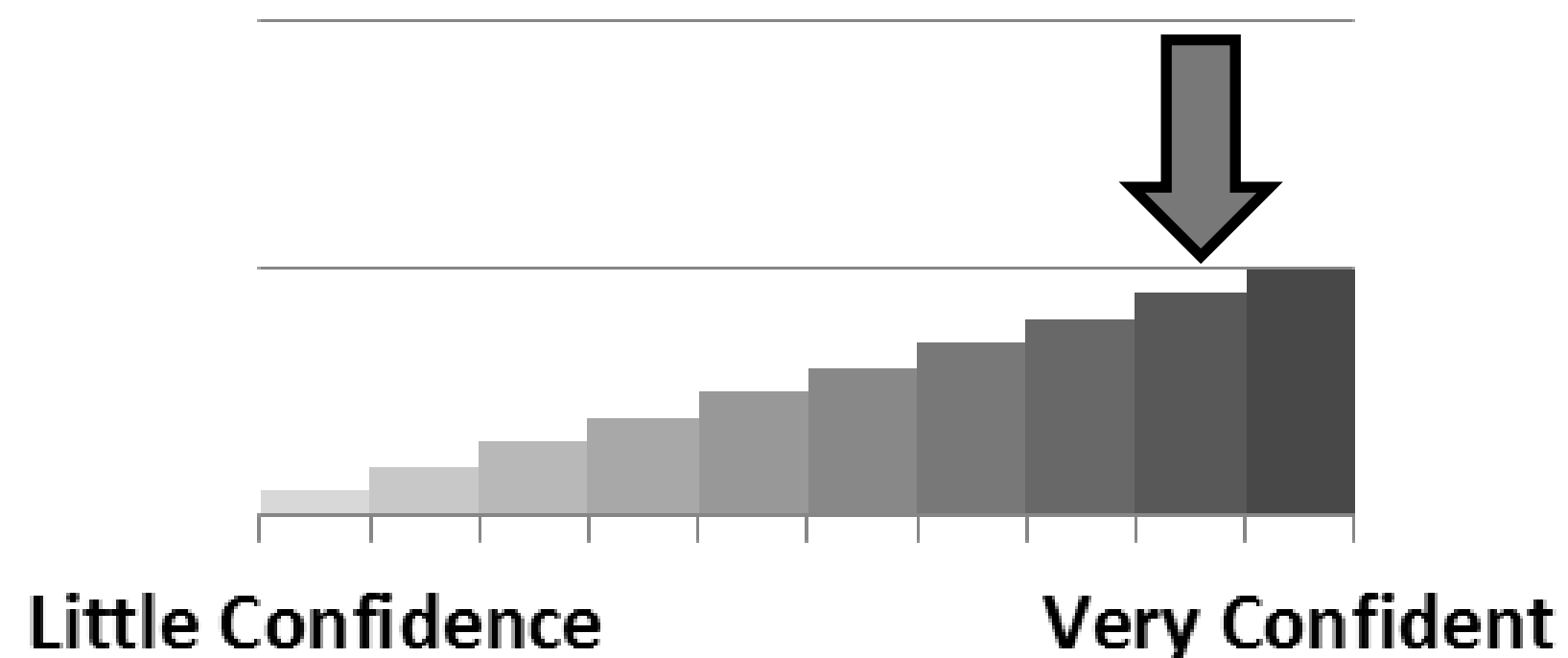


Key Take-Aways

Hurricane Ida

- Ida could still bring hurricane force wind gusts in parts of St. Martin, Iberia, and St. Mary Parishes this afternoon and tonight.
- Tropical storm force winds can be expected across the remainder of south central Louisiana.
- Highest rain totals of 3 to 8 inches is possible in the rain bands in south central Louisiana.
- Cypremort Point and Burns Point will flood 1-2 ft from storm surge late tonight into Monday morning.

Forecast Confidence



There is high confidence this system will make landfall in southeast Louisiana.

There is high confidence this system will cause life threatening storm surge and damaging hurricane force winds in southeast Louisiana.



Next Briefing: Sunday 1:00 PM CDT Method: Webinar



Web: <http://weather.gov/lakecharles>



Phone: (337) 477-5285 x223



E-mail: roger.erickson@noaa.gov



Facebook: NWSLakeCharles



Twitter: NWSLakeCharles



YouTube: NWSLakeCharles

For the latest graphics and information go to: www.hurricanes.gov or weather.gov/lch/tropic