

# Promoting COVID-19 Vaccine in Long-term Care Settings

[Print this Page](#)



The risk for severe COVID-19 illness increases with older adults and those with [underlying medical conditions](#). Because of this, the federal government is committed to ensuring that residents and staff in long-term care (LTC) settings, such as nursing homes, assisted living communities, residential care communities, group homes and senior housing, have access to COVID-19 vaccines. For additional examples of LTC settings, see [COVID-19 Vaccine Access in Long-Term Care Settings](#) [↗](#).



[Information About Who Is Eligible for a COVID-19 Vaccine Booster Shot](#)

The goal is to continue to protect people who are disproportionately affected by COVID-19—especially residents in LTC settings. It is important to build [confidence in COVID-19 vaccines](#) while increasing protection for LTC residents.

Many LTC providers have already identified strategies and partnerships to obtain and administer COVID-19 vaccines for residents and staff. These include the following:

- Working with established [LTC partners and retail pharmacy partners](#)
- Coordinating with state and local health departments
- [Ensuring COVID-19 vaccine equity](#) for LTC staff and residents

Additional strategies can be found in the [LTC Pharmacy Partnerships](#) section of the [CDC COVID-19 Vaccination Planning and Partnerships](#) page.

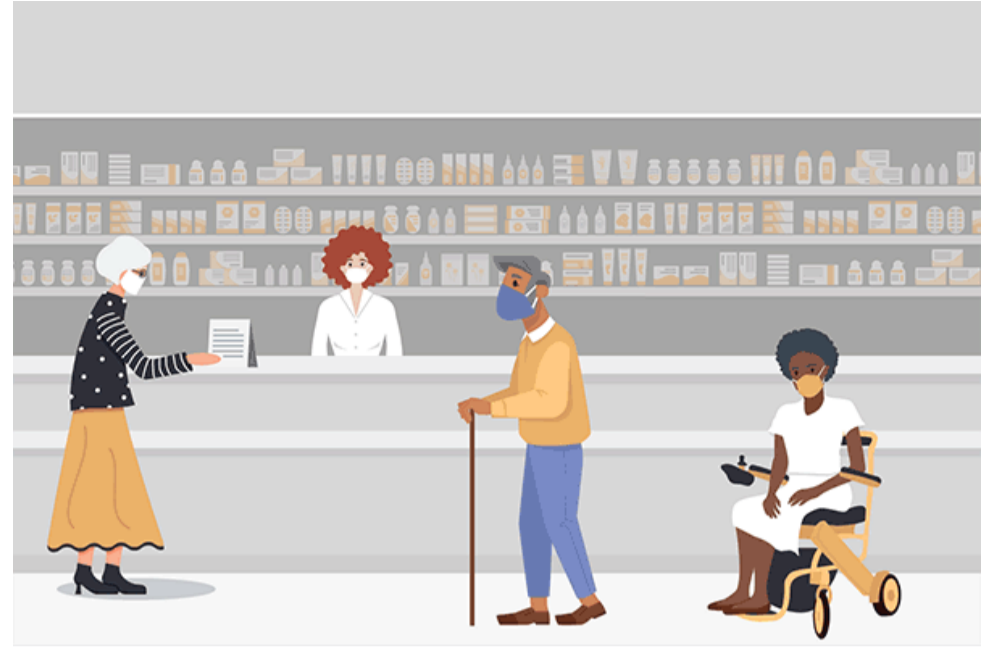
LTC providers are encouraged to consider the option that works best for their residents and staff when coordinating access to COVID-19 vaccines, either in the local community or on-site. Additional details on these options are available on the pages linked below.



[Information for Long-term Care Administrators and Managers](#)



[Information for Jurisdictions \(State and Local Immunization Programs\)](#)



## Additional Information: COVID-19 Vaccination Recommendations

COVID-19 vaccines available in the United States are [highly effective](#) at preventing serious outcomes of COVID-19 including severe disease, hospitalization, and death. As with other infectious diseases, people are protected best from COVID-19 when they stay up to date with recommended vaccine doses. Efforts to maximize the proportion of people in the United States who are fully vaccinated against COVID-19 remain critical to reducing the spread.

[Staying up to date](#) means getting all recommended COVID-19 vaccine doses, including a [booster shot](#), when eligible.

People who are moderately or severely immunocompromised have specific COVID-19 vaccine recommendations, which include an [additional third dose](#) to complete their primary series, as well as a [booster shot](#) for those eligible.

COVID-19 vaccines may be administered along with and on the same day as other vaccines, such as the flu vaccine. Administer each injection in a different injection site. For more information, see [Interim Clinical Considerations for Use of COVID-19 Vaccines](#).

### Additional Resources

[Long-term Care Administrators and Managers: Options for Coordinating Access to COVID-19 Vaccines](#)

[How Jurisdictions Can Ensure COVID-19 Vaccine Access for Staff and Residents in Long-term Care Settings](#)

[FAQs About Medical Consent & Additional Dose of mRNA COVID-19 Vaccine for Long-term Care Residents](#)

[COVID-19 Vaccines for Long-term Care Residents](#)

[About mRNA Vaccines: Background Information for Healthcare Providers](#)

Page last reviewed: July 5, 2022